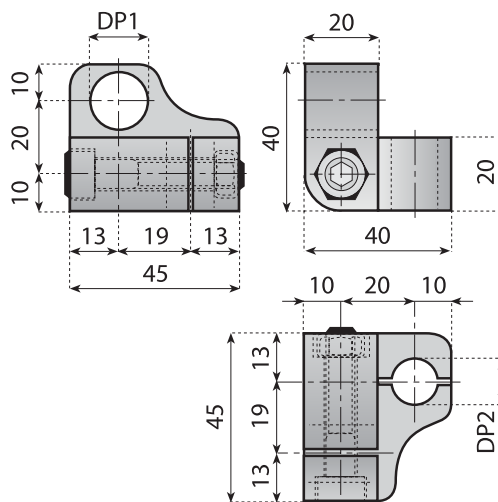


Single action two way cross block

Patent
pending



304 Stainless steel



Polyamide



Accessories

SINGLE ACTION TWO WAY CROSS BLOCK

Feature: the special design provides a means for rapid adjustment of both vertical and horizontal side rail positions with the release of a single bolt or knob.

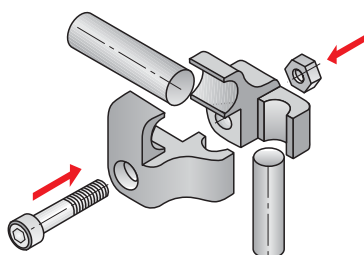
Material: reinforced polyamide, screws in stainless steel AISI 304.

Supply: assembled.

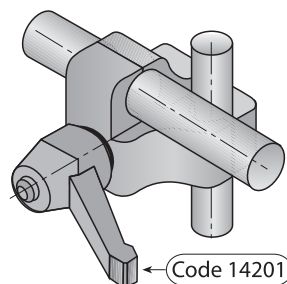
Packaging: 50 pieces.

Code	DP1	DP2
13135	12	12
13139	14	14
13144	16	16

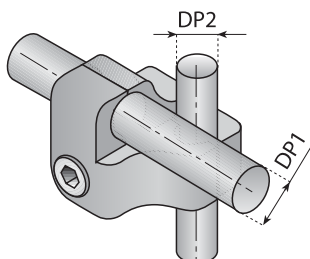
Example application



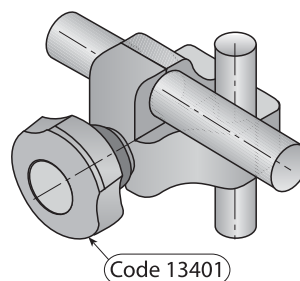
Adjustment with ratchet handle code 14201



Adjustment with bolts



Adjustment with knob code 13401



Positive action cross block



304 Stainless steel



Polyamide



Zinc plated steel



Accessories

EXAMPLE APPLICATION



POSITIVE ACTION CROSS BLOCK

Material: reinforced polyamide.

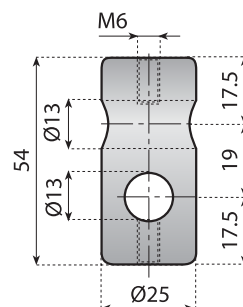
Use: rod Ø 12 mm.

Packaging: 100 pieces.

Code

13180

Without screws



POSITIVE ACTION CROSS BLOCK WITH SCREWS

Material: reinforced polyamide, screws in stainless steel.

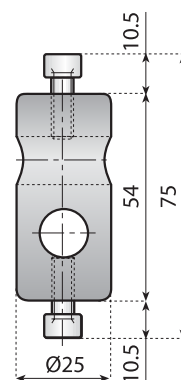
Supply: assembled.

Packaging: 100 pieces.

Code

13181

With screws



POSITIVE ACTION CROSS BLOCK WITH STAR KNOBS

Material: reinforced polyamide, knobs in polyamide with stainless steel insert.

Use: rod Ø 12 mm.

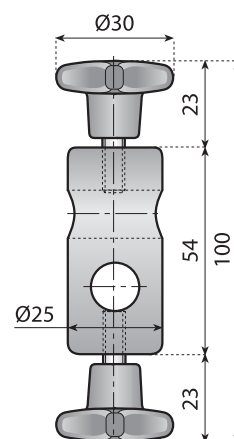
Supply: assembled.

Packaging: 100 pieces.

Code

13182

With star knobs



POSITIVE ACTION CROSS BLOCK WITH KNOBS

Material: reinforced polyamide, knobs in polyamide with zinc plated steel insert.

Use: rod Ø 12 mm.

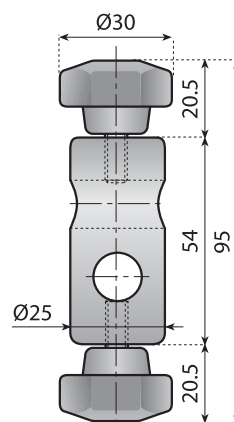
Supply: assembled.

Packaging: 100 pieces.

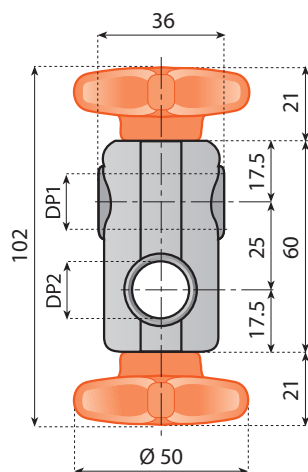
Code

13183

With knobs



Quick positioning cross block



304 Stainless steel



Nickel plated brass



Polyamide



Accessories

QUICK RELEASE CROSS BLOCK

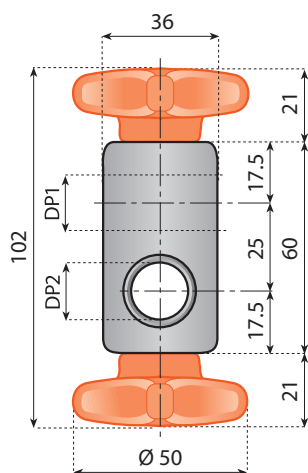
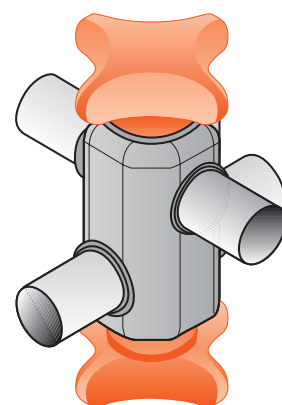
Material: housing in reinforced polyamide, hardware in stainless steel, knobs in polyamide with bushings in nickel plated brass.

Features: it connects two round rods at 90°. Each side of the cross block can be quickly adjusted by loosening the hand knob.

Supply: assembled.

Packaging: 50 pieces.

Code	DP1	DP2
13316	12	12
13317	12	14
13318	12	16
13319	14	14
13320	14	16
13321	16	16



QUICK RELEASE CROSS BLOCK

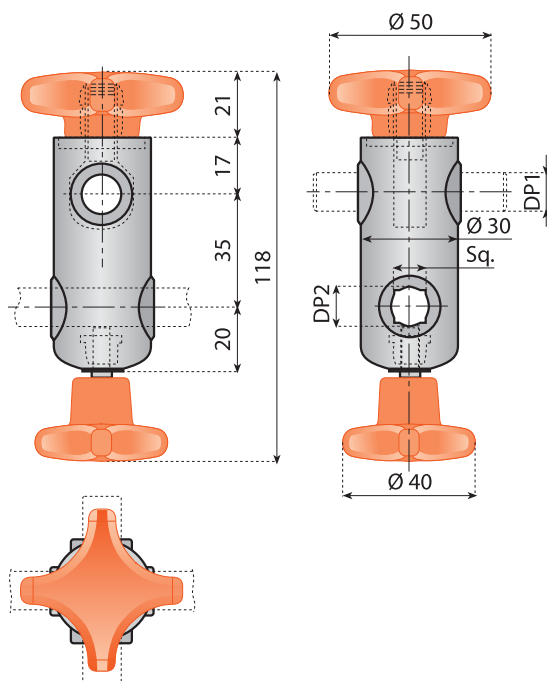
Material: body in stainless steel, hardware in stainless steel, knobs in polyamide with bushings in nickel plated brass.

Features: it connects two round rods at 90°. Each side of the cross block can be quickly adjusted by loosening the hand knob.

Supply: assembled.

Code			
with knobs colour			
Orange	Black	DP1	DP2
13360V	13360VN	12	12
13361V	13361VN	12	14
13362V	13362VN	12	16
13363V	13363VN	14	12
13364V	13364VN	14	14
13365V	13365VN	16	16

Quick positioning cross block



SS
304

304 Stainless steel

NPB

Nickel plated brass

PA

Polyamide

268 → 275

Accessories

CROSS BLOCK WITH KNOBS

Components:

- Housing in reinforced polyamide.
- Washer and hardware in stainless steel.
- Knobs in reinforced polyamide with one threaded insert in stainless steel and one brass bushing.

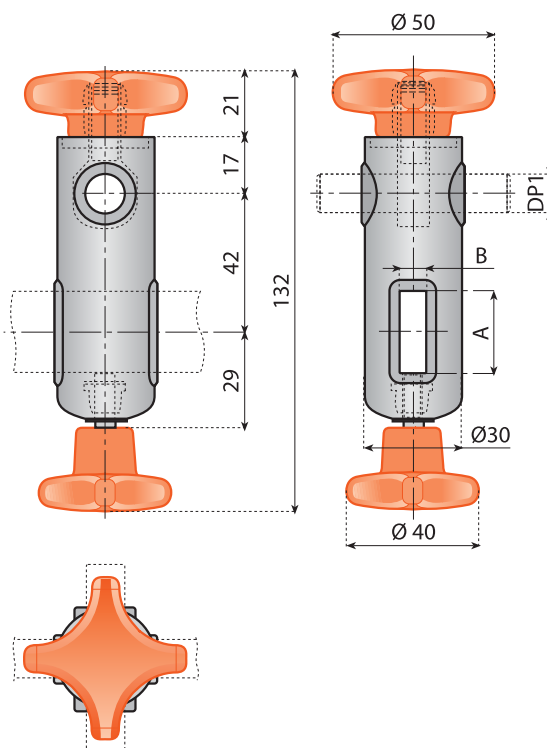
Features:

- Connects two round rods or one round rod with square bar at 90°.
- Each side of the cross block can be quickly adjusted by loosening the hand knob.

Supply: assembled.

Packaging: 50 pieces.

Code	DP1	DP2	
		●	■
13310V	12	12	10
13311V	12	14	12
13322V	14	12	10
13312V	14	14	12



CROSS BLOCK WITH KNOBS

Components:

- Housing in reinforced polyamide.
- Washer and hardware in stainless steel.
- Knobs in reinforced polyamide with one threaded insert in stainless steel and one brass bushing.

Features:

- Connects one round rod with flat bar at 90°.
- Each side of the cross block can be quickly adjusted by loosening the hand knob.

Supply: assembled.

Packaging: 50 pieces.

Code	DP1	FLAT BAR
		A x B
13260V	12	25 x 8
13261V	14	25 x 8
13262V	12	25 x 6
13263V	14	25 x 6

Dual action cross block



304 Stainless steel



Nickel plated brass



Polyamide



Accessories

DUAL ACTION CROSS BLOCK

Features: for fast line changes the new System Plast Dual Action Cross Block provides simplicity and easy in achieving the accuracy needed in adjusting multiple stations simultaneously.

By simply rotating the quick release cap, the Dual Action Cross Block is placed in a neutral, non clamping, position.

The side guides and other rails can then be moved to the desired location before returning the quick release cap to its locked position.

- This new patented part is perfect for applications where accurate and / or frequent adjustments are required.
- Fits 12-14 mm diameter adjusting rods.
- Corrosion resistance composite components.
- Ergonomic spring loaded design.

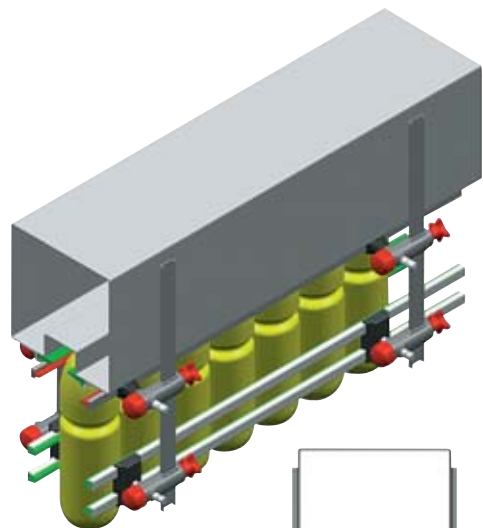
Components:

- External Housing (polyamide).
- Internal Housing (see the table).
- Closing Cap (polyamide).
- Spring (steel).
- Knob (polyamide with threaded insert in stainless steel).
- Threaded insert (nickel plated brass).

Supply: assembled.

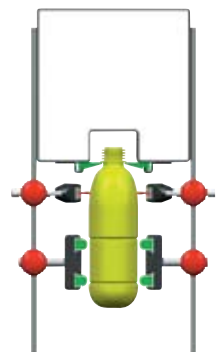
Packaging: 50 pieces.

Patent pending

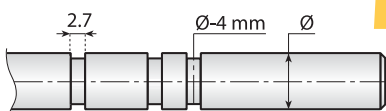
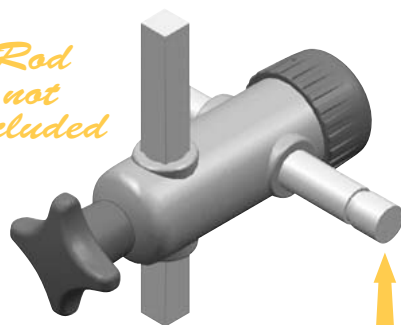


Advantages:

- Rapid adjustment of guides to accommodate the choice of bottle format.
- Quick and easy maintenance.

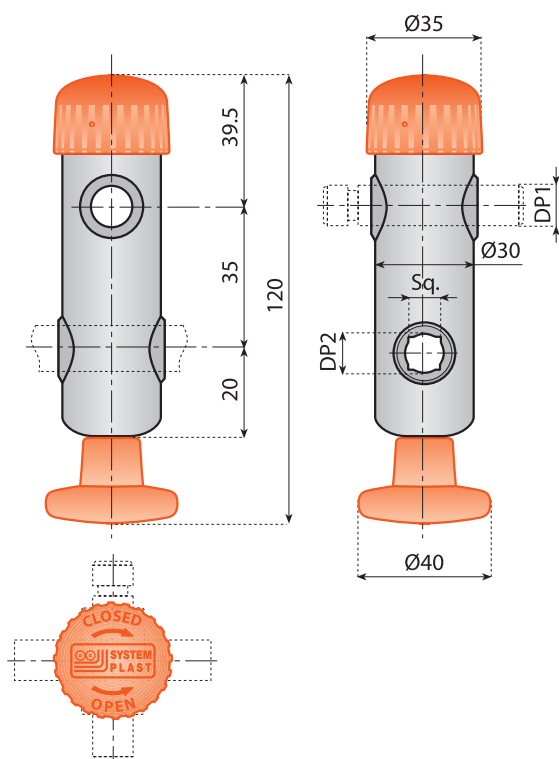


Rod not included



Rod dimensions

Code	Internal block	DP1	DP2	
			●	■
13310		12	12	10
13311	Reinforced polyamide	12	14	12
13322		14	12	10
13312		14	14	12
13313		12	12	10
13314	Nickel	12	14	12
13323	plated brass	14	12	10
13315		14	14	12



For a correct use of these products and to get the best performance, please call our engineering experts.

Dual action cross block fine positioning version



304 Stainless steel



Nickel plated brass



Polyamide



Accessories

DUAL ACTION CROSS BLOCK

Features: for fast line changes the new System Plast Dual Action Cross Block provides simplicity and easy in achieving the accuracy needed in adjusting multiple stations simultaneously. By simply rotating the quick release cap, the Dual Action Cross Block is placed in a neutral, non clamping, position. The side guides and other rails can then be moved to the desired location before returning the quick release cap to its locked position.

- This new patented part is perfect for applications where accurate and / or frequent adjustments are required.
- Fits 12-14 mm diameter adjusting rods.
- Corrosion resistance composite components.
- Ergonomic spring loaded design.

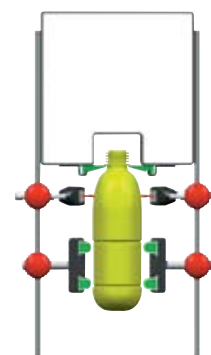
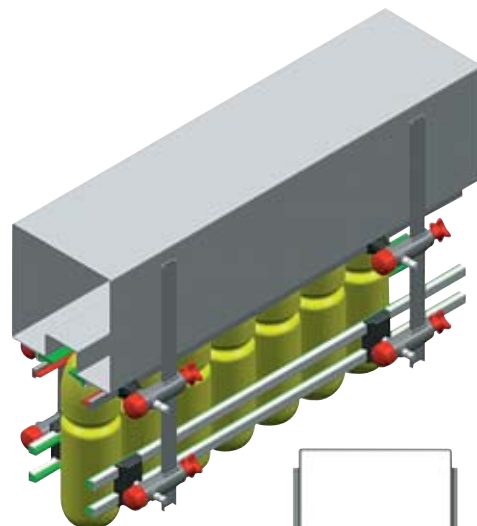
Components:

- External Housing (polyamide)
- Internal Housing (see the table)
- Closing Cap (polyamide)
- Spring (steel)
- Knob (polyamide with threaded insert in stainless steel).
- Threaded insert (nickel plated brass).

Supply: assembled.

Packaging: 50 pieces.

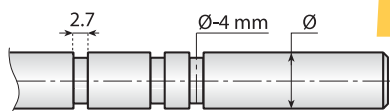
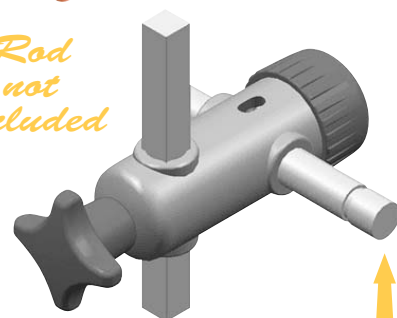
Patent pending



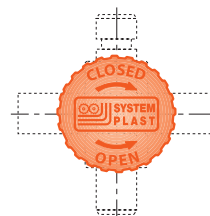
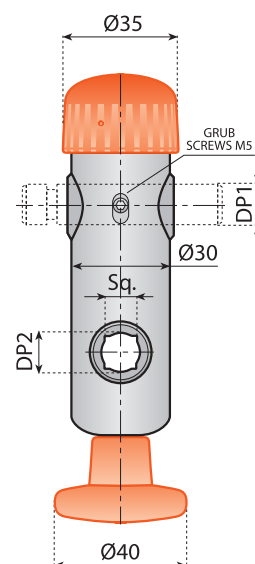
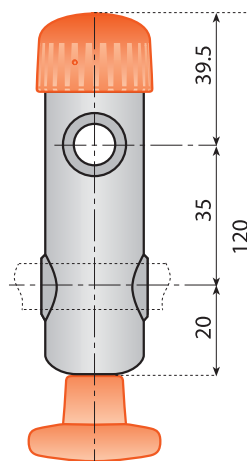
Advantages:

- Rapid adjustment of guides to accommodate the choice of bottle format.
- Quick and easy maintenance.

Rod not included



Rod dimensions



Code	Internal block	DP1	DP2	
			●	■
13313FP	Nickel plated brass	12	12	10
13314FP		12	14	12
13323FP		14	12	10
13315FP		14	14	12

For a correct use of these products and to get the best performance, please call our engineering experts.

Dual action cross block (for flat bar)



304 Stainless steel



Nickel plated brass



Polyamide



Accessories

DUAL ACTION CROSS BLOCK

Features: for fast line changes the new System Plast Dual Action Cross Block provides simplicity and easy in achieving the accuracy needed in adjusting multiple stations simultaneously. By simply rotating the quick release cap, the Dual Action Cross Block is placed in a neutral, non clamping, position.

The side guides and other rails can then be moved to the desired location before returning the quick release cap to its locked position.

- This new patented part is perfect for applications where accurate and / or frequent adjustments are required.
- Fits 12-14 mm diameter adjusting rods.
- Corrosion resistance composite components.
- Ergonomic spring loaded design.

Components:

- External Housing (polyamide)
- Internal Housing (see the table)
- Closing Cap (polyamide)
- Spring (steel)
- Knob (polyamide with threaded insert in stainless steel).
- Threaded insert (nickel plated brass).

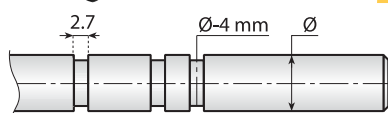
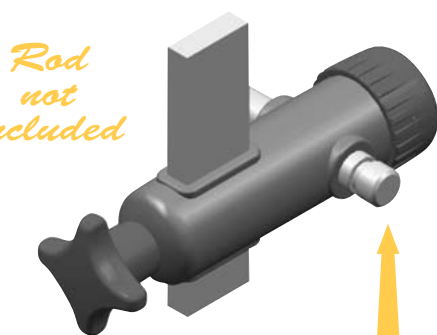
Supply: assembled.

Packaging: 50 pieces.

Patent pending

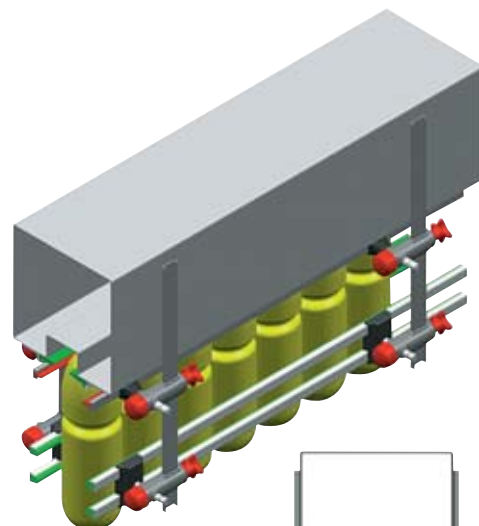


Rod not included



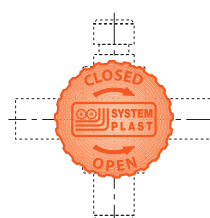
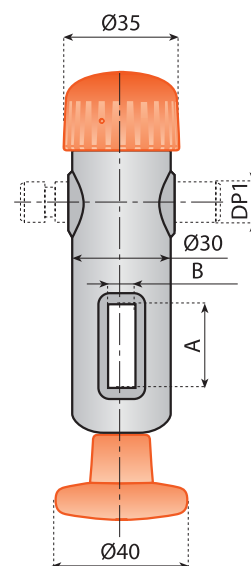
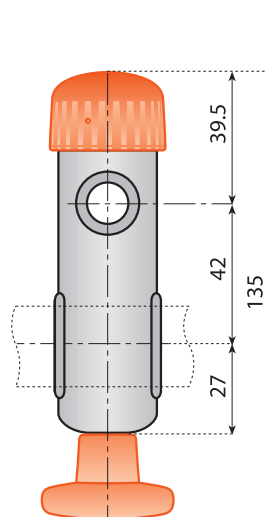
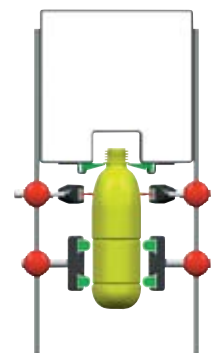
Rod dimensions

Code	Internal block	DP1	Flat bar A x B
13260		12	25 x 8
13261	Reinforced polyamide	14	25 x 8
13262		12	25 x 6
13263		14	25 x 6
13264		12	25 x 8
13265	Nickel	14	25 x 8
13266	plated brass	12	25 x 6
13267		14	25 x 6



Advantages:

- Rapid adjustment of guides to accommodate the choice of bottle format.
- Quick and easy maintenance.



For a correct use of these products and to get the best performance, please call our engineering experts.

Dual action cross block fine positioning version (for flat bar)



304 Stainless steel



Nickel plated brass



Polyamide



Accessories

DUAL ACTION CROSS BLOCK

Features: for fast line changes the new System Plast Dual Action Cross Block provides simplicity and easy in achieving the accuracy needed in adjusting multiple stations simultaneously. By simply rotating the quick release cap, the Dual Action Cross Block is placed in a neutral, non clamping, position.

The side guides and other rails can then be moved to the desired location before returning the quick release cap to its locked position.

- This new patented part is perfect for applications where accurate and / or frequent adjustments are required.
- Fits 12-14 mm diameter adjusting rods.
- Corrosion resistance composite components.
- Ergonomic spring loaded design.

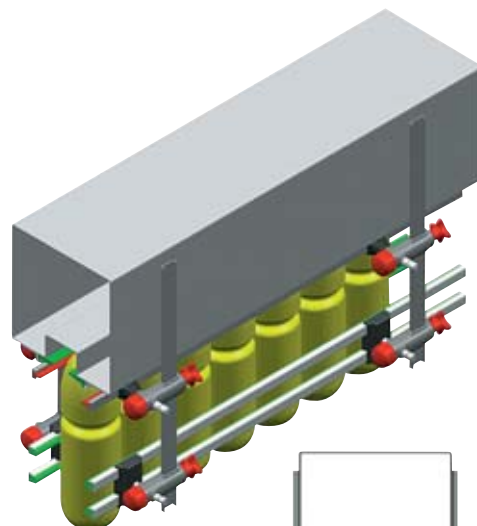
Components:

- External Housing (polyamide)
- Internal Housing (see the table)
- Closing Cap (polyamide)
- Spring (steel)
- Knob (polyamide with threaded insert in stainless steel)
- Threaded insert (nickel plated brass).

Supply: assembled.

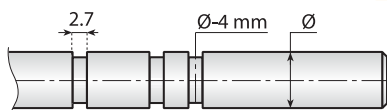
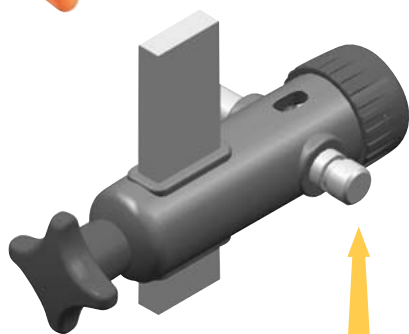
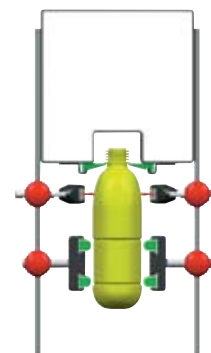
Packaging: 50 pieces.

Patent pending

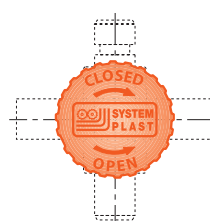
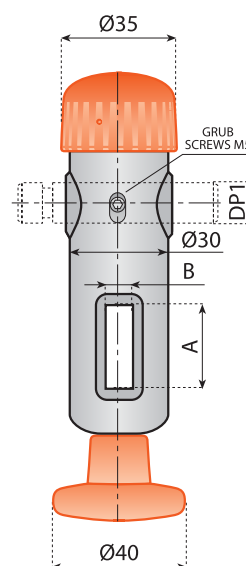
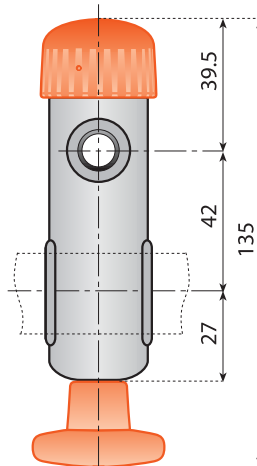


Advantages:

- Rapid adjustment of guides to accommodate the choice of bottle format.
- Quick and easy maintenance.



Rod dimensions



Code	Internal block	DP1	Flat bar A x B
13264FP		12	25 x 8
13265FP	Nickel	14	25 x 8
13266FP	plated brass	12	25 x 6
13267FP		14	25 x 6

For a correct use of these products and to get the best performance, please call our engineering experts.

Cross blocks



304 Stainless steel



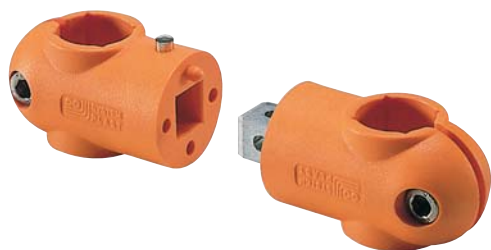
Nickel plated brass



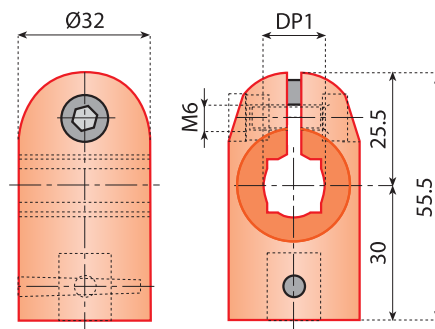
Polyamide



Accessories



New



CROSS BLOCKS

Features: cross blocks, in a variety of bore configurations, including square bore combinations, are manufactured from reinforced polyamide.

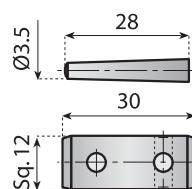
Use: it connects two round or square rods at 90°.

Material: reinforced polyamide with stainless steel bolts.

Supply: unassembled.

Packaging: 100 pieces.

Code	DP1	
	●	■
13666	14	12
13667	15	–
13668	16	14
13669	18	–
13670	20	16



CONNECTING JOINT AND PINS

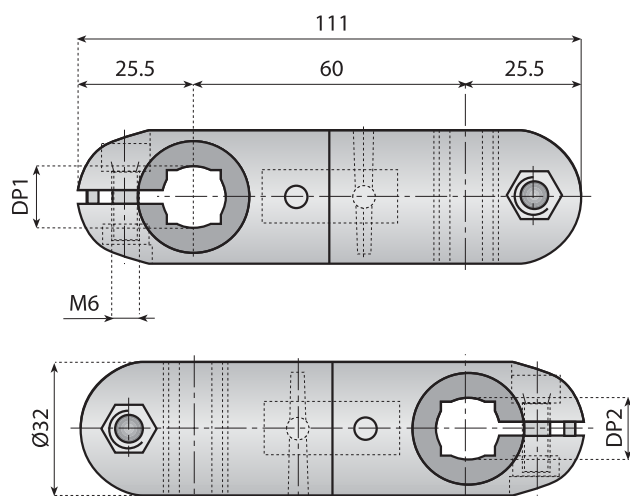
Material: nickel plated brass.

Supply: separate two pins and one connecting joints.

Packaging: 100 pieces.

Code
13671

Extra long cross or parallel blocks



EXTRA LONG CROSS BLOCKS

Features: cross blocks, in a variety of bore configurations, including square bore combinations, are manufactured from reinforced polyamide.

Use: it connects two round or square rods at 90°.

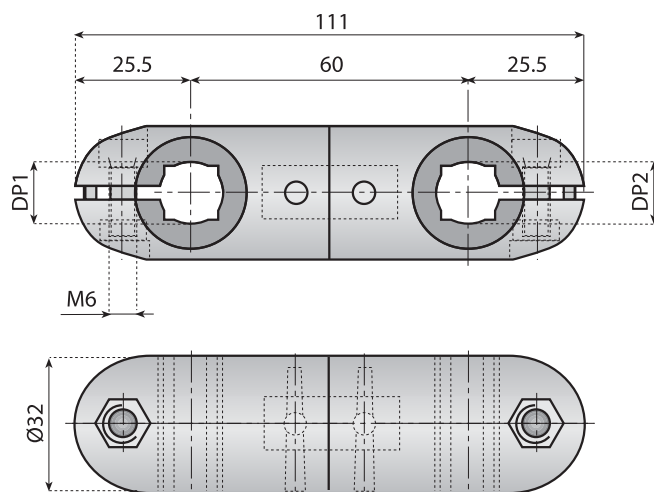
Material: reinforced polyamide with stainless steel bolts. Internal connecting joint and pins in nickel plated brass.

Supply: assembled.

Packaging: 100 pieces.



Code	DP1		DP2	
	●	■	●	■
13651P	14	12	14	12
13652P	14	12	15	–
13653P	14	12	16	14
13654P	14	12	18	–
13655P	14	12	20	16
13656P	15	–	15	–
13657P	15	–	16	14
13658P	15	–	18	–
13659P	15	–	20	16
13660P	16	14	16	14
13661P	16	14	18	–
13662P	16	14	20	16
13663P	18	–	18	–
13664P	18	–	20	16
13665P	20	16	20	16



EXTRA LONG PARALLEL BLOCKS

Features: cross blocks, in a variety of bore configurations, including square bore combinations, are manufactured from reinforced polyamide.

Use: it connects two round or square rods at parallel.

Material: reinforced polyamide with stainless steel bolts. Internal connecting joint and pins in nickel plated brass.

Supply: assembled.

Packaging: 100 pieces.



Code	DP1		DP2	
	●	■	●	■
13651L	14	12	14	12
13652L	14	12	15	–
13653L	14	12	16	14
13654L	14	12	18	–
13655L	14	12	20	16
13656L	15	–	15	–
13657L	15	–	16	14
13658L	15	–	18	–
13659L	15	–	20	16
13660L	16	14	16	14
13661L	16	14	18	–
13662L	16	14	20	16
13663L	18	–	18	–
13664L	18	–	20	16
13665L	20	16	20	16

T - Clamp (base)



304 Stainless steel



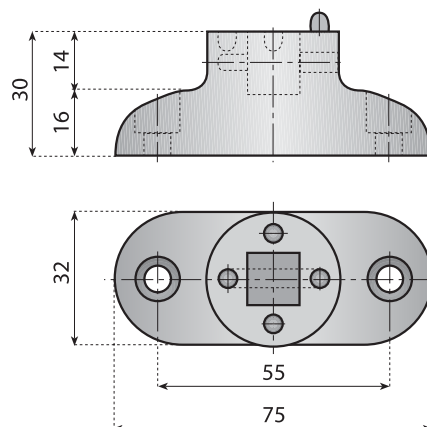
Nickel plated brass



Polyamide



Accessories



Code

131008

T-MOBILE CLAMPS

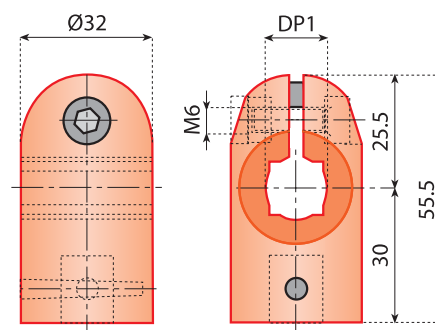
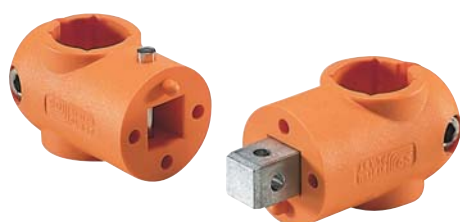
Features: it mounts to the side of equipment to provide support for light duty application.

Use: with single cross block

Material: reinforced polyamide with stainless steel bolts.

Supply: unassembled

Packaging: 100 pieces.



CROSS BLOCKS

Features: cross blocks, in a variety of bore configurations, including square bore combinations, are manufactured from reinforced polyamide.

Use: connects two round or square rods at 90°.

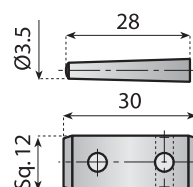
Material: reinforced polyamide with stainless steel bolts.

Supply: unassembled.

Packaging: 100 pieces.

Code

	DP1	
	●	■
13666	14	12
13667	15	–
13668	16	14
13669	18	–
13670	20	16



CONNECTING JOINT AND PINS

Material: nickel plated brass.

Supply: separate two pins and one connecting joints.

Packaging: 100 pieces.

Code

13671

T - mobile clamp



304 Stainless steel



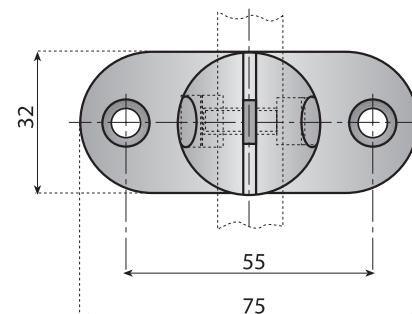
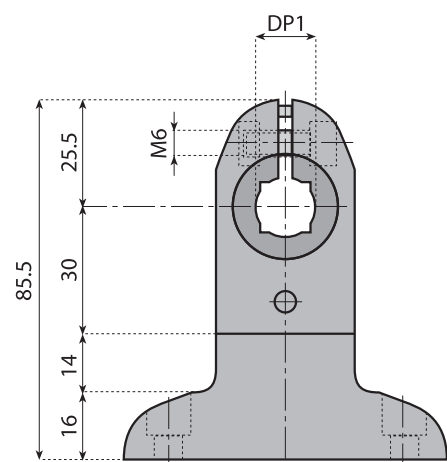
Nickel plated brass



Polyamide



Accessories



T-MOBILE CLAMPS

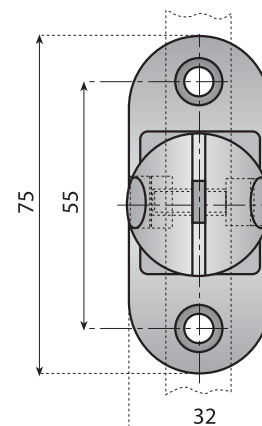
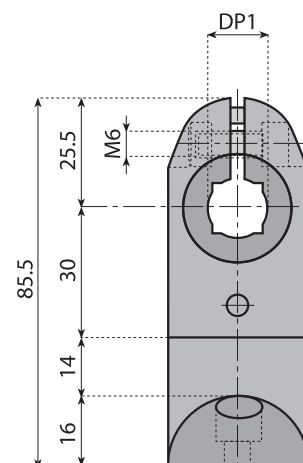
Features: mounts to side of equipment to provide support light duty rod type guide rail system.

Material: reinforced polyamide with stainless steel bolts; Internal connecting joints and pins in nickel plated brass.

Supply: assembled.

Packaging: 100 pieces.

Code	●	■
131010P	14	12
131011P	15	-
131012P	16	14
131013P	18	-
131014P	20	16



T-MOBILE CLAMPS

Features: mounts to side of equipment to provide support light duty rod type guide rail system.

Material: reinforced polyamide with stainless steel bolts; Internal connecting joints and pins in nickel plated brass.

Supply: assembled.

Packaging: 100 pieces.

Code	●	■
131010L	14	12
131011L	15	-
131012L	16	14
131013L	18	-
131014L	20	16

Standard cross blocks



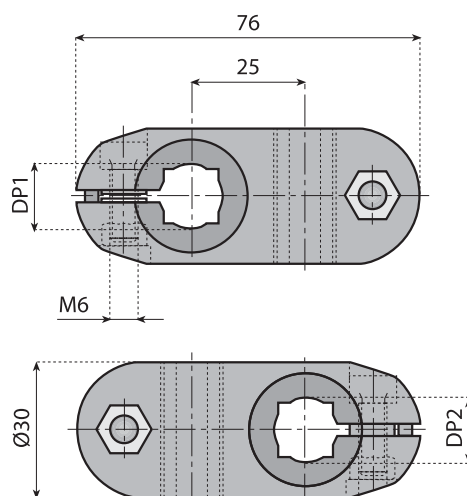
304 Stainless steel



Acetal resin



Polyamide



Code	DP1		DP2	
	●	■	●	■
13105	14	12	14	12
13106	14	12	15	–
13107	14	12	16	14
13111	14	12	18	–
13140	14	12	20	16
13108	15	–	15	–
13109	15	–	16	14
13112	15	–	18	–
13141	15	–	20	16
13110	16	14	16	14
13113	16	14	18	–
13142	16	14	20	16
13093	18	–	18	–
13143	18	–	20	16
13104	20	16	20	16
13104K	–	16	20	16

CROSS BLOCK

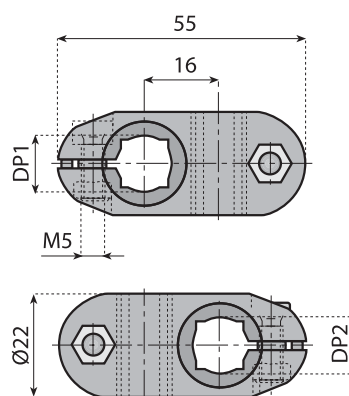
Features: cross blocks, in a variety of bore configurations, including square bore combinations, are manufactured from reinforced polyamide.

Use: connects two round or square rods at 90°.

Material: reinforced polyamide with stainless steel fasteners.

Supply: assembled.

Packaging: 50 pieces.



MINI CROSS BLOCK

Features: cross blocks, in a variety of bore configurations, including square bore combinations, are manufactured from reinforced polyamide.

Use: connects two round or square rods at 90°.

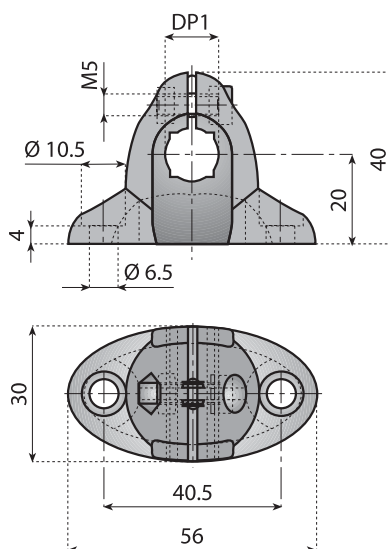
Material: acetal resin with stainless steel fasteners.

Supply: assembled.

Packaging: 50 pieces.

Code	DP1		DP2	
	●	■	●	■
13151	10	8	10	8
13145	10	8	12	10
13146	10	8	14	12
13114	12	10	12	10
13147	12	10	14	12
13160	14	12	14	12

T. Clamp



304 Stainless steel



Acetal resin

T-CLAMP

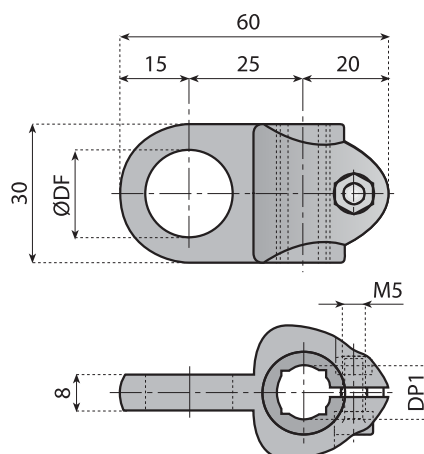
Features: mounts to side of equipment to provide support for light duty rod type guide rail system.

Material: acetal resin with stainless steel fasteners.

Supply: assembled.

Packaging: 50 pieces.

Code	DP1	
	●	■
13152	10	8
13115	12	10
13161	14	12



Code	DP1		Ø DF
	●	■	
13600	10	8	8
13601	10	8	10
13602	10	8	12
13603	10	8	14
13604	10	8	16
13153	10	8	19
13605	12	10	8
13606	12	10	10
13607	12	10	12
13608	12	10	14
13609	12	10	16
13116	12	10	19
13610	14	12	8
13611	14	12	10
13612	14	12	12
13613	14	12	14
13614	14	12	16
13162	14	12	19

CLAMP

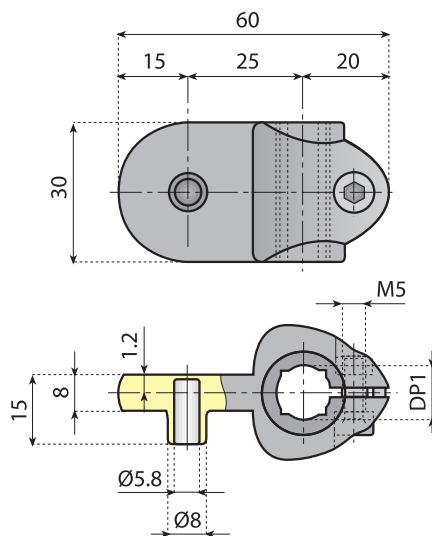
Features: used to hold many types of accessories. Numerous bore sizes available.

Material: acetal resin with stainless steel fasteners.

Supply: assembled.

Packaging: 50 pieces.

Reflector clamp



Acetal resin



304 Stainless steel

REFLECTOR CLAMP

Features: used to hold reflectors using a cap screw and nut or pression clip.

Material: acetal resin with stainless steel fasteners.

Supply: assembled.

Packaging: 50 pieces.

Code	DP1	
	●	■
13157	10	8
13158	12	10
13159	14	12



TUBE

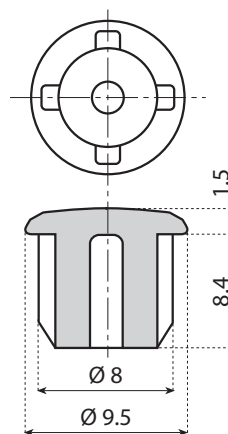
Material: S/S AISI 304

- external d. 10 mm

- thickness 1 mm

- length 3 m

Code
13155



CUP

Material: polyamide

Code
13156

Mounting assembly kit



304 Stainless steel



Acetal resin



Polyethylene



REFLECTOR MOUNTING ASSEMBLY KIT (for reflector)

Material: clamps in acetal resin tightening bolt and connecting tubes in stainless steel AISI 304, closing caps in polyethylene.

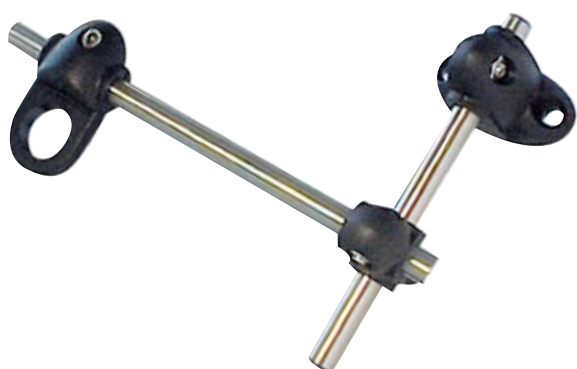
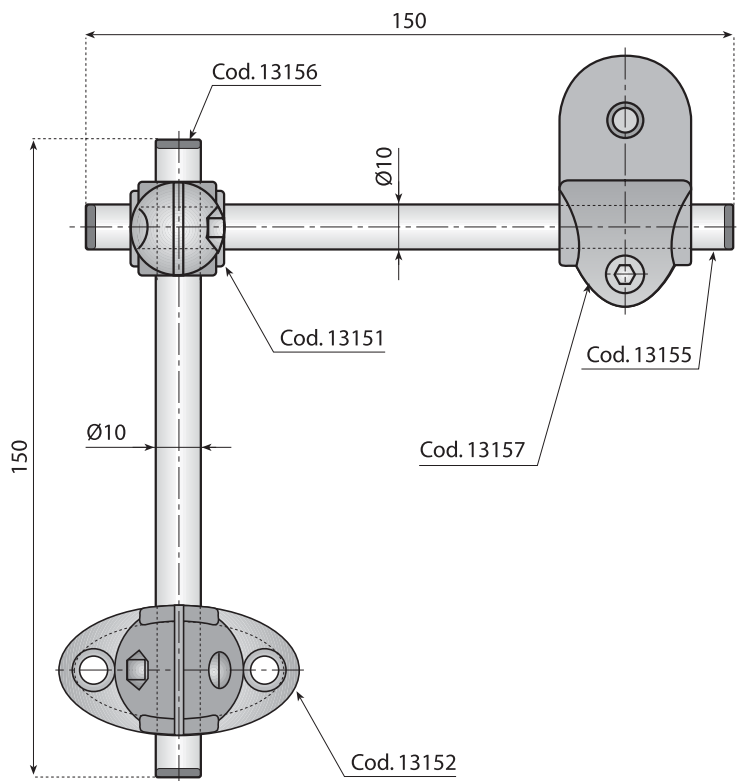
Components: nr° 1 T-Clamp, nr° 1 clamp, nr° 1 cross block, nr° 2 connecting tubes, nr° 4 closing caps.

Supply: unassembled.

Packaging: 25 completely kit.

Code

13148



SENSOR MOUNTING ASSEMBLY KIT (for Ø 18 mm sensor)

Material: clamps in acetal resin tightening bolt and connecting tubes in stainless steel AISI 304, closing caps in polyethylene.

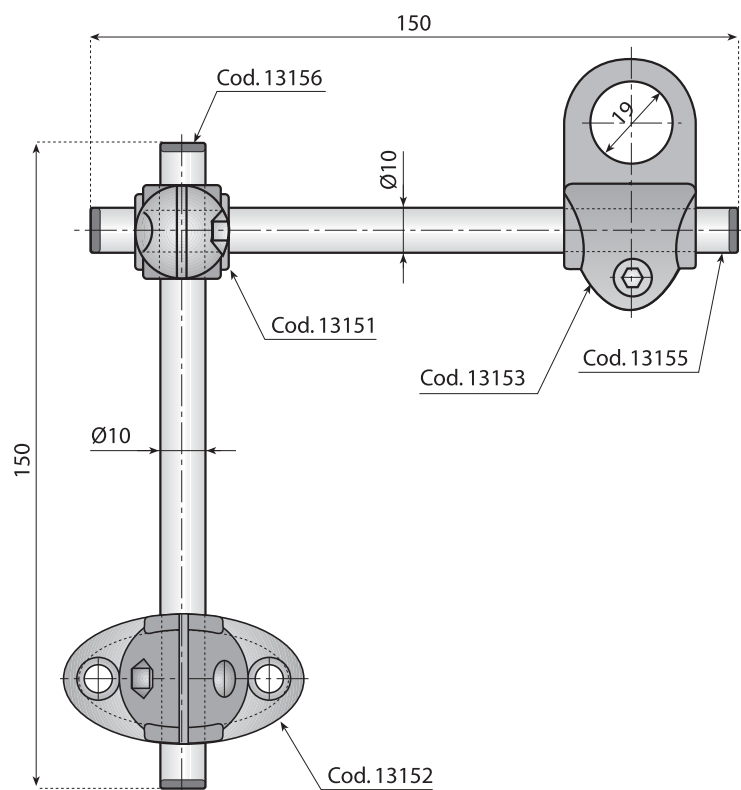
Components: nr° 1 T-Clamp, nr° 1 clamp, nr° 1 cross block, nr° 2 connecting tubes, nr° 4 closing caps.

Supply: unassembled.

Packaging: 25 completely kit.

Code

13154



Extra cross block



304 Stainless steel



Nickel plated brass



Polyamide



Accessories

EXTRA CROSS BLOCK STANDARD

Material: reinforced polyamide bolts and nut in stainless steel.

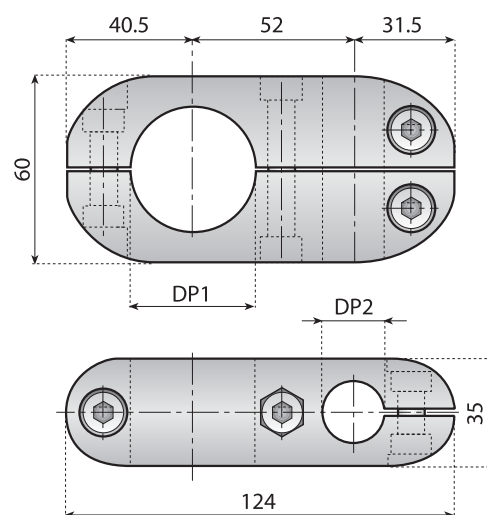
Supply: assembled.

Packaging: 50 pieces.

Note: max recommended tightening torque 3 Kgm.



Code	DP1	DP2
13509	■ 40	● 20
13510	■ 40	■ 20
13511	■ 40	● 18 ■ 15
13512	■ 40	● 16
13513	■ 30	● 20
13514	■ 30	■ 20
13515	■ 30	● 18 ■ 15
13516	■ 30	● 16
13517	● 42.4	● 20
13518	● 42.4	■ 20
13519	● 42.4	● 18 ■ 15
13520	● 42.4	● 16
13521	● 38.1	● 20
13522	● 38.1	■ 20
13523	● 38.1	● 18 ■ 15
13524	● 38.1	● 16



EXTRA CROSS BLOCK WITH HANDLES

Material: cross block in reinforced polyamide, bolts and nut in stainless steel, adjustable handles in reinforced polyamide with insert in nickel plated brass.

Application: for use in areas where frequent adjusting is required for vertical movement.

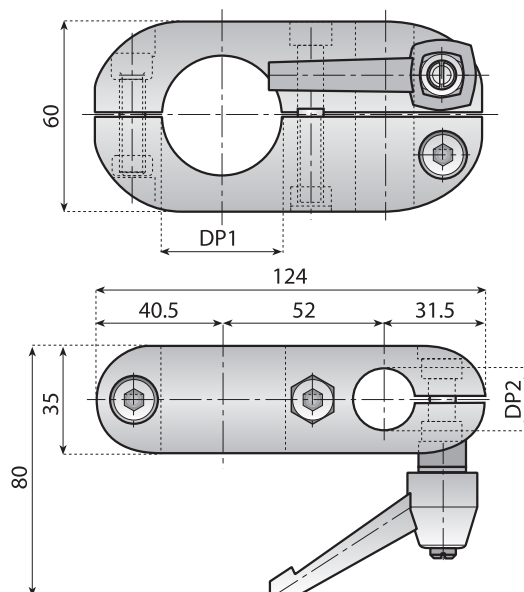
Supply: assembled.

Packaging: 50 pieces.

Note: max recommended tightening torque 3 Kgm.



Code	DP1	DP2
13509V	■ 40	● 20
13510V	■ 40	■ 20
13511V	■ 40	● 18 ■ 15
13512V	■ 40	● 16
13513V	■ 30	● 20
13514V	■ 30	■ 20
13515V	■ 30	● 18 ■ 15
13516V	■ 30	● 16
13517V	● 42.4	● 20
13518V	● 42.4	■ 20
13519V	● 42.4	● 18 ■ 15
13520V	● 42.4	● 16
13521V	● 38.1	● 20
13522V	● 38.1	■ 20
13523V	● 38.1	● 18 ■ 15
13524V	● 38.1	● 16



Extra cross block

EXTRA CROSS BLOCK WITH HANDLES

Material: cross block in reinforced polyamide, bolts and nut in stainless steel, adjustable handles in reinforced polyamide with insert in nickel plated brass.

Applications: for use in areas where frequent adjusting is required for horizontal and vertical movement.

Supply: assembled.

Packaging: 50 pieces.

Note: max recommended tightening torque 3 Kgm.



304 Stainless steel



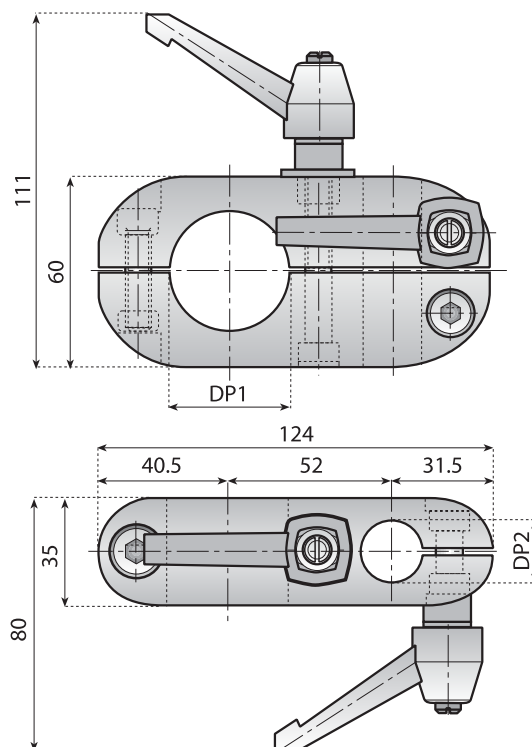
Nickel plated brass



Polyamide



Accessories



Code	DP1	DP2
13509HV	■ 40	● 20
13510HV	■ 40	■ 20
13511HV	■ 40	● 18 ■ 15
13512HV	■ 40	● 16
13513HV	■ 30	● 20
13514HV	■ 30	■ 20
13515HV	■ 30	● 18 ■ 15
13516HV	■ 30	● 16
13517HV	● 42.4	● 20
13518HV	● 42.4	■ 20
13519HV	● 42.4	● 18 ■ 15
13520HV	● 42.4	● 16
13521HV	● 38.1	● 20
13522HV	● 38.1	■ 20
13523HV	● 38.1	● 18 ■ 15
13524HV	● 38.1	● 16

EXTRA CROSS BLOCK WITH HANDLES

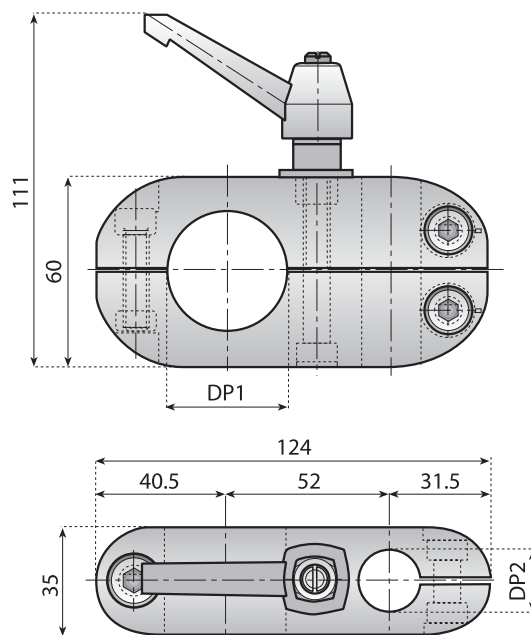
Material: cross block in reinforced polyamide, bolts and nut in stainless steel, adjustable handles in reinforced polyamide with insert in nickel plated brass.

Applications: for use in areas where frequent adjusting is required for horizontal and vertical movement.

Supply: assembled.

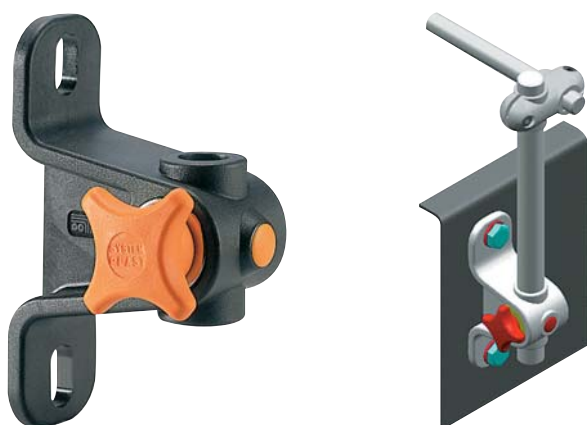
Packaging: 50 pieces.

Note: max recommended tightening torque 3 Kgm.



Code	DF 1	DF 2
13509H	■ 40	● 20
13510H	■ 40	■ 20
13511H	■ 40	● 18- ■ 15
13512H	■ 40	● 16
13513H	■ 30	● 20
13514H	■ 30	■ 20
13515H	■ 30	● 18- ■ 15
13516H	■ 30	● 16
13517H	● 42.4	● 20
13518H	● 42.4	■ 20
13519H	● 42.4	● 18- ■ 15
13520H	● 42.4	● 16
13521H	● 38.1	● 20
13522H	● 38.1	■ 20
13523H	● 38.1	● 18- ■ 15
13524H	● 38.1	● 16

Bracket



BRACKET WITH HAND KNOB (Hand knob/eyelet does not mark rod surface)

Material: bracket in reinforced polyamide, eyelet in metal, knob in polyamide with bushing insert in nickel plated brass, washer in stainless steel.

Features: knob fastening provides holding and positioning for many rods.

Heavy duty construction for increased strength and rigidity.

Supply: assembled.

Packaging: 50 pieces.

Code	For rod Ø	
	●	■
13231	14	12
13232	15	–
13233	16	14
13234	18	–
13235	20	16



304 Stainless steel



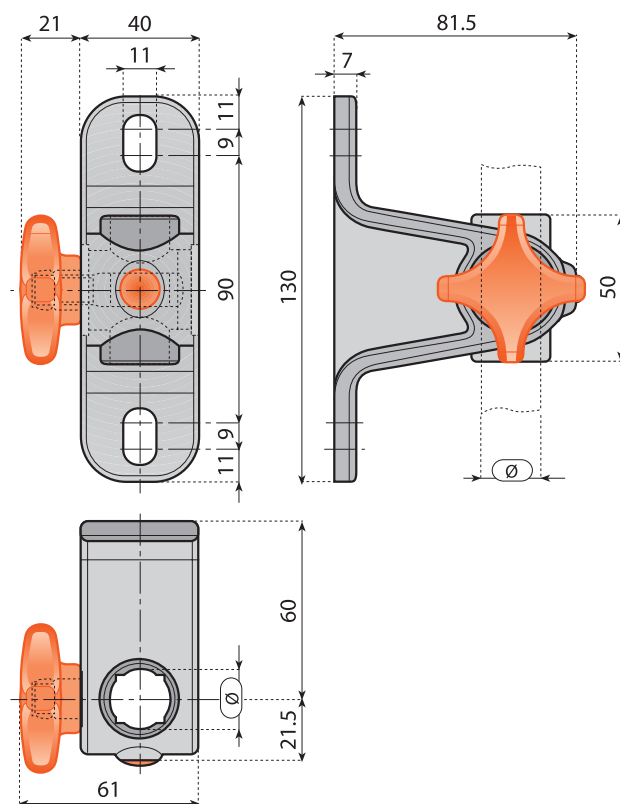
Nickel plated brass



Polyamide



Accessories



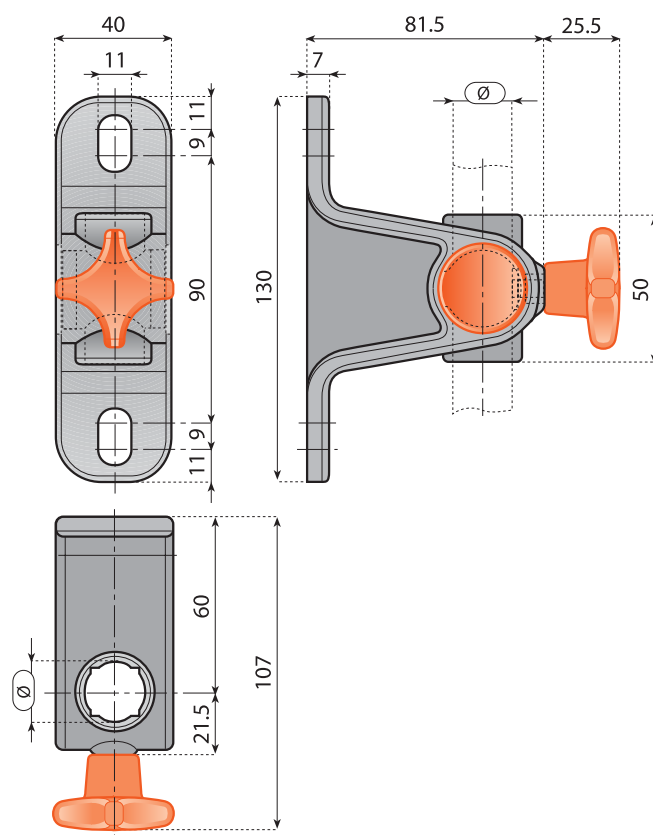
BRACKET WITH SCREW OR HAND KNOB

Material: bracket in reinforced polyamide, stainless steel screw, knob in polyamide with threaded insert in stainless steel.

Supply: assembled.

Packaging: 50 pieces.

Code		For rod Ø	
with screw	with knob	●	■
13236	13237	14	12
13238	13239	15	–
13240	13241	16	14
13242	13243	18	–
13244	13245	20	16



Universal clamp for photocells or reflectors



304 Stainless steel



Nickel plated brass



Polyamide



Accessories



Code	For rod Ø
13616H	14
13617H	15
13618H	16
13619H	18
13620H	20

Movement on the three axis

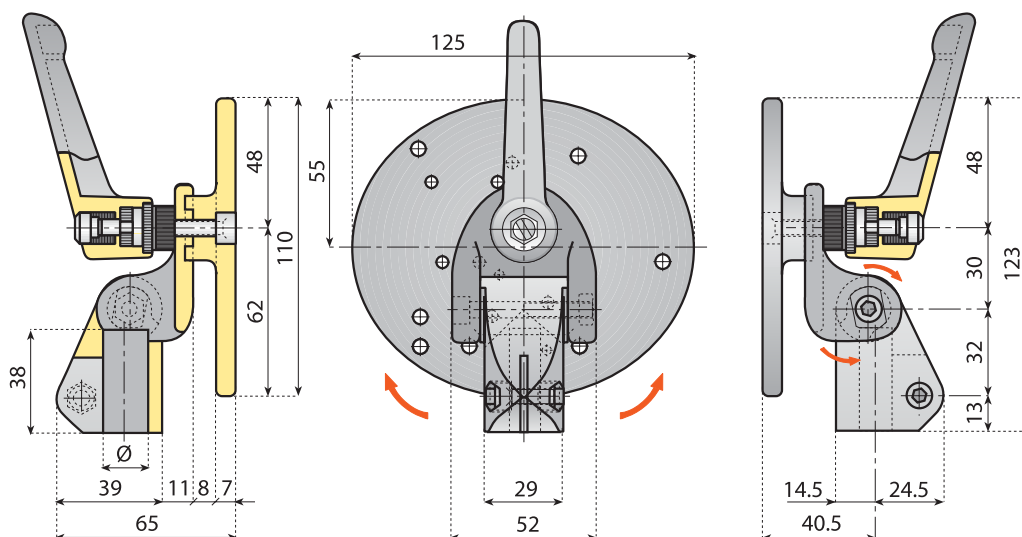
UNIVERSAL CLAMP WITH ADJUSTABLE HANDLE FOR PHOTOCELLS OR REFLECTORS

Material: clamp in reinforced polyamide, tightening bolt in stainless steel, adjustable handle in polyamide with threaded insert in nickel plated brass.

Supply: assembled.

Packaging: 50 pieces.

Note: max recommended tightening torque 2 Kgm.



Movement on the three axis

UNIVERSAL CLAMP FOR PHOTOCELLS OR REFLECTORS

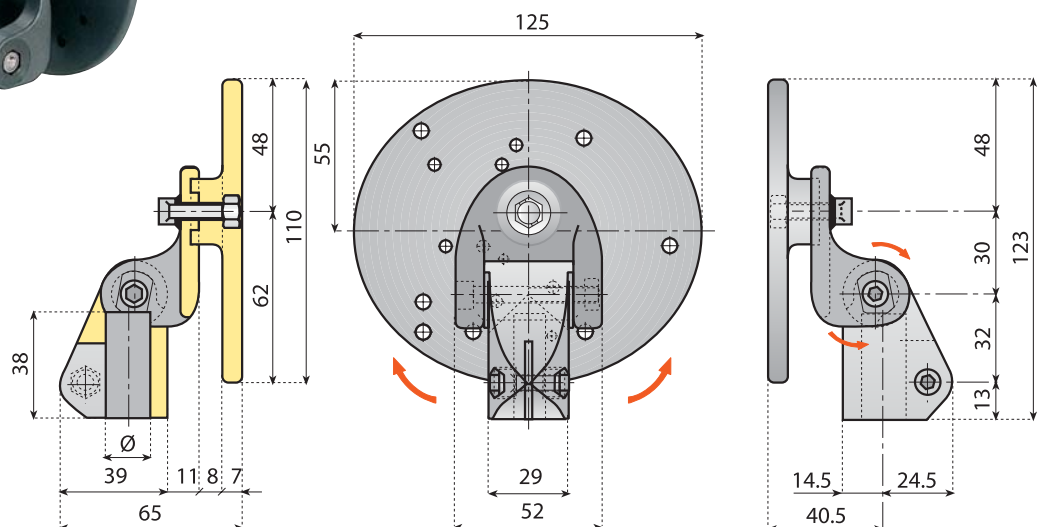
Material: clamp in reinforced polyamide, tightening bolt in stainless steel.

Supply: assembled.

Packaging: 50 pieces.

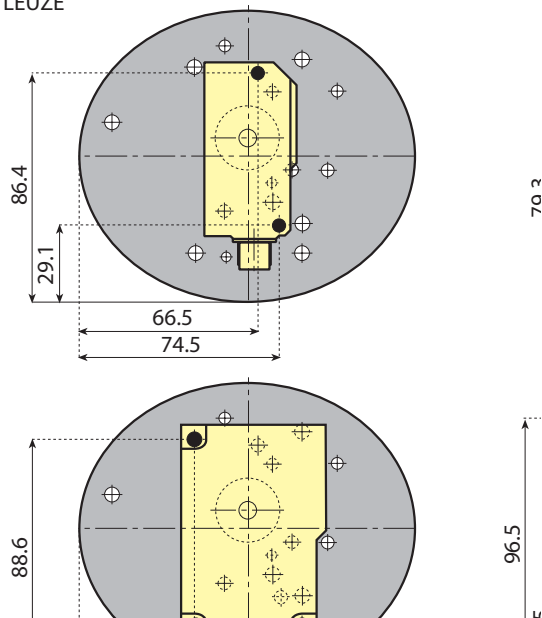
Note: max recommended tightening torque 2 Kgm.

Code	For rod Ø
13616	14
13617	15
13618	16
13619	18
13620	20

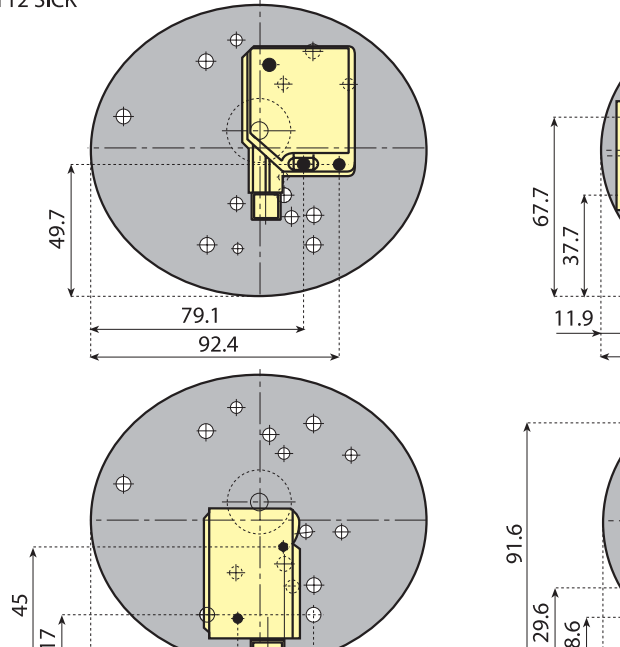


Suitable photocell types

PRK 95 LEUZE



WT12 SICK



KIT UNIVERSAL CLAMP FOR PHOTOCELLS OR REFLECTORS WITH TUBE

Material: cross clamp in reinforced polyamide, tightening bolt and tube in stainless steel.

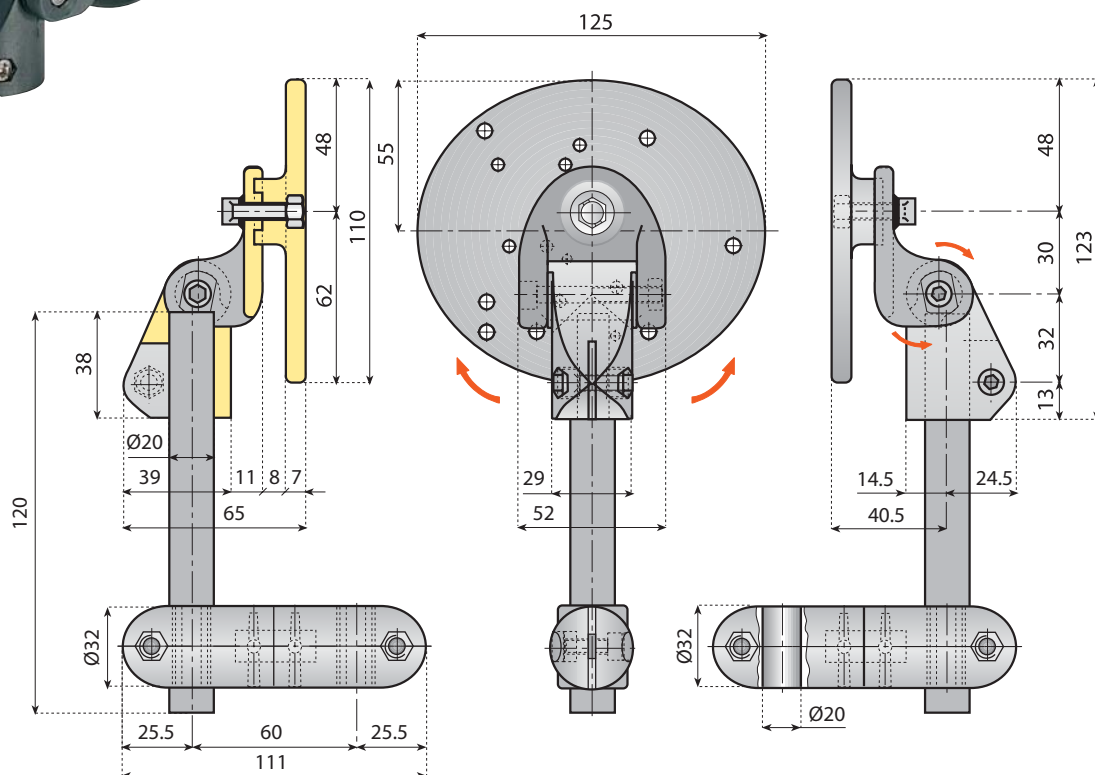
Supply: assembled.

Packaging: 50 pieces.

Note: max recommended tightening torque 2 Kgm.



Movement on the three axis



Code	For rod Ø
13615	20

Clamp for photocells or reflectors



304 Stainless steel Polyamide

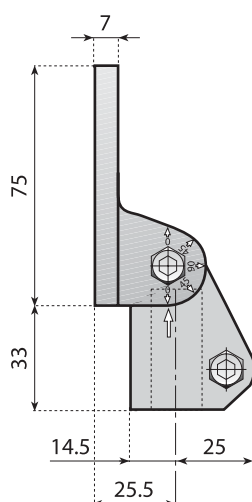
CLAMP FOR PHOTOCELLS OR REFLECTORS

Material: reinforced polyamide, tightening bolts in stainless steel AISI 304.

Use: can be fitted in position **A - B - C**

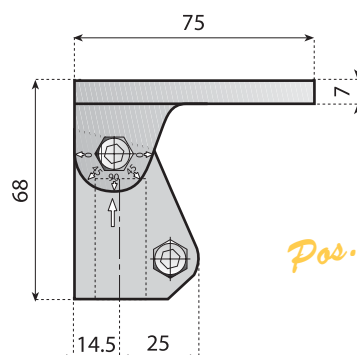
Supply: assembled, (position A).

Packaging: 50 pieces.

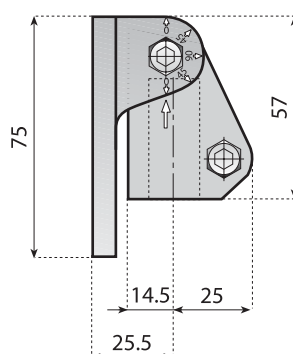


Pos. A

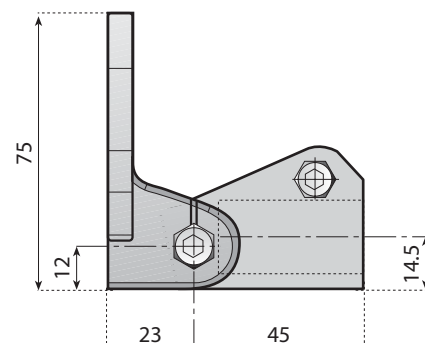
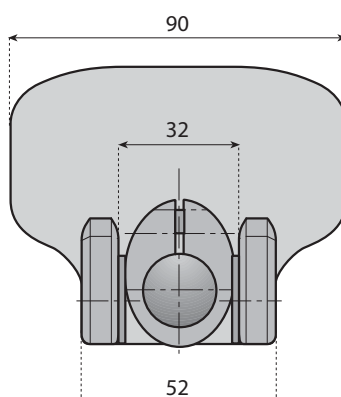
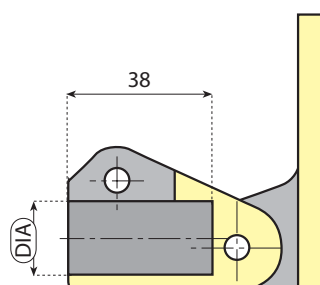
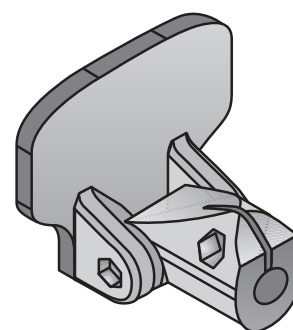
Code	For rod Ø
13500	14
13505	15
13506	16
13507	18
13508	20



Pos. B



Pos. C



Photocell accessories



304 Stainless steel



Nickel plated brass



Polyamide

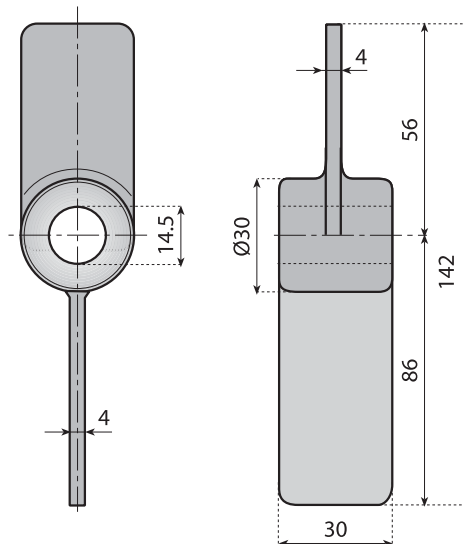


BOTTLE INDICATOR

Material: reinforced polyamide.

Application: activation of photocells on conveyors and machines.

Packaging: 50 pieces.



Code

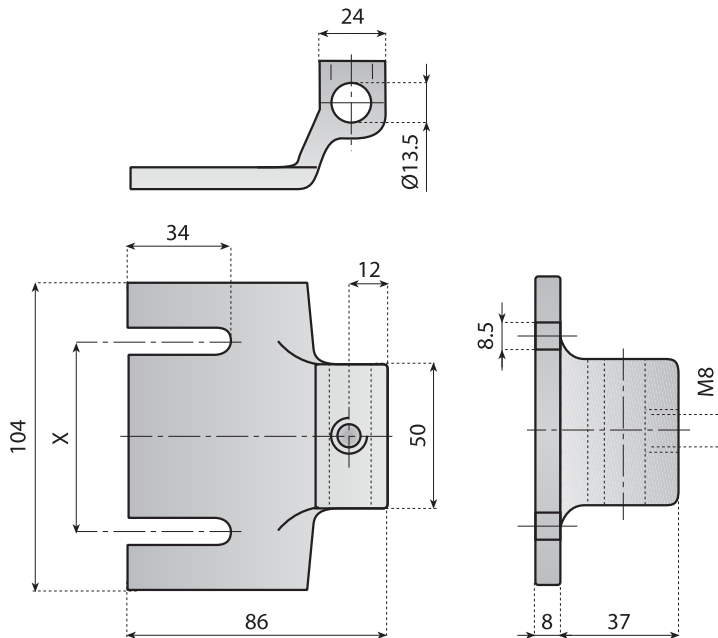
13150



CLAMP BRACKET OVER HEAD

Material: bracket in reinforced polyamide, threaded bushing in nickel plated brass.

Packaging: 50 pieces.



Code

13846

X

13899

55

64.5

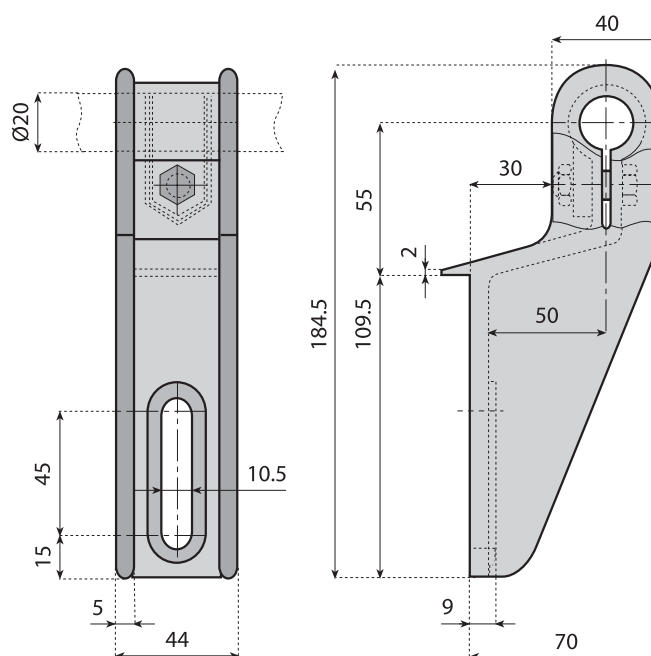
Photocell accessories



304 Stainless steel



Polyamide



SIDE BRACKET FOR HORIZONTAL TUBES

Material: bracket in reinforced polyamide, nut, bolt and washers in stainless steel AISI 304.

Supply: assembled.

Packaging: 50 pieces.

Code

13898

Split shafting collars

SPLIT SHAFTING COLLAR

Material: acetal resin, bolts in stainless steel, threaded insert in nickel plated brass.

Use: these parts can be used on the conveyors as a reference point when the side guides need to be repositioned.

Note: The new collars offer high corrosion resistance. The new part exhibits high strength at considerably less cost than stainless steel.

The new collars are the ideal replacement for conventional al collars in situation where they cannot be easily removed and replaced.

Supply: assembled.

Packaging: 100 pieces.



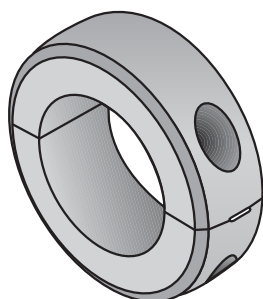
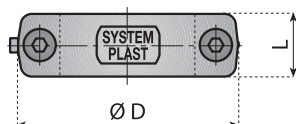
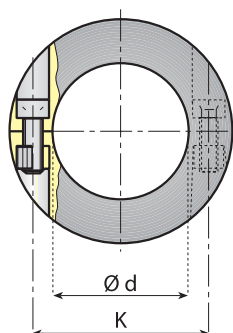
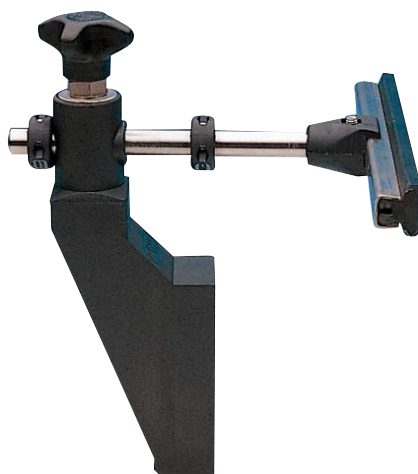
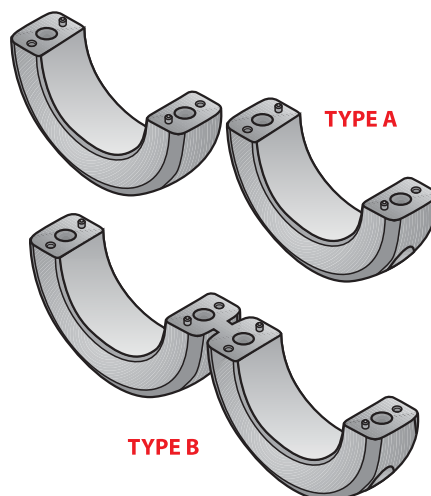
Acetal resin



304 Stainless steel



Nickel plated brass



Code	Type	d	D	L	K	Screws
12696	B	10	30	12	20	M3
12698	A	12	30	12	20	M3
12700	A	14	28	12	20	M3
12697	B	15	39	14	27	M4
12701	A	16	30	12	22	M3
12699	A	18	39	14	27	M4
12702	A	20	39	14	29	M4
12703	A	25	44	14	34	M4
12704	A	30	49	16	39	M4
12714	B	30	49	14	39	M4
12705	A	35	56	16	45	M4
12706	A	40	64	18	51.5	M5
12715	B	40	64	14	51.5	M4

Split shafting collars for shaft with keyway



Acetal resin



304 Stainless steel



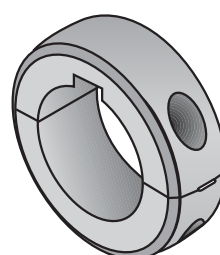
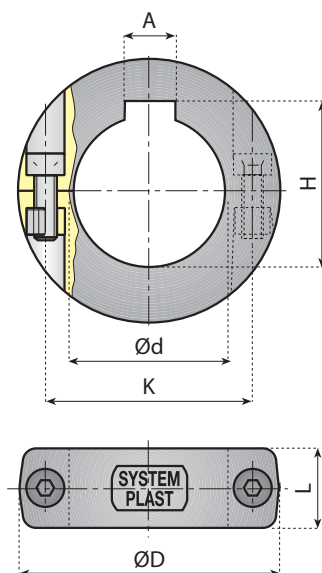
Nickel plated brass



Polyamide



Range extension



SPLIT SHAFTING COLLAR

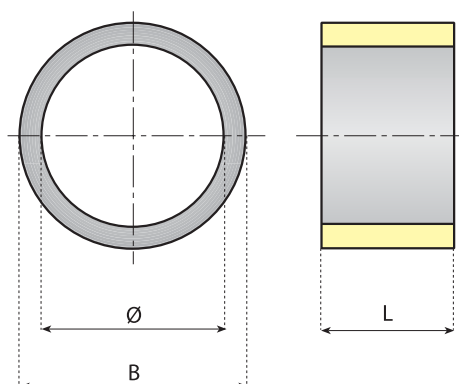
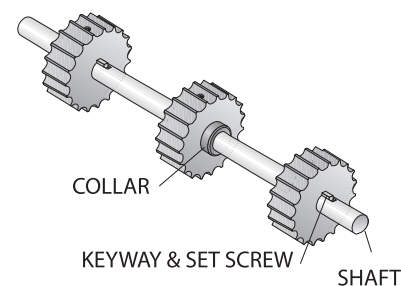
Material: reinforced polyamide, screws in stainless steel, threaded insert in nickel plated brass.

Use: for shaft with key way.

Supply: assembled.

Packaging: 100 pieces.

Code	d	D	A	H	L	K	Screws	
12710	25	45	8	P9	28.3 ^{+0.2} ₀	14	34	M4
12709	30	50	8	P9	33.3 ^{+0.2} ₀	16	39	M4
12708	35	57	10	P9	38.3 ^{+0.2} ₀	16	45	M4
12707	40	64	12	P9	43.3 ^{+0.2} ₀	18	51.5	M5



IDLER SPACER

Material: polyamide.

Packaging: 50 pieces.

Code	For shaft Ø	B	L
12829	30	40	29
12830	40	50	29

