

Series **SS-UCFQ**



**Flange bearing in stainless steel
series SS-UCFQ
for plain shafts
d 20-25-30-35-40 mm**



see also... Features: page 180

Lubrication/maintenance: 181

Mounting instructions: 182

Calculation of load capacity
and bearing life: 184

Accessories: 176

Chemical resistance: 192

TECHNICAL INFORMATION

- **Optimal corrosive resistance.**
- **High load capacity.**
- **100% Stainless steel**
- **Self-alignment:**
Max misalignment between shaft and housing:
2,5°
- **Low maintenance and trouble-free operation.**
- **Concept and design to meet all safety requirements.**
- **Interchangeable :**
Interchangeable with standard cast iron supports.
- **Excellent for use in food processing, beverage and pharmaceutical Industry.**

COMPONENTS

- 1 Housing in stainless steel.
- 2 Adjustable ball bearing, pre-lubricated, lubricated by means of grease-nipple or a quick coupler.
- 3 Ball-type grease-nipple.
- 4 Washer for grease-nipple.

MAX. RADIAL LOAD CAPACITY OF HOUSING

Values indicated in the table above, are obtained at 23°C. Strength of housing indicated on page 184.



VERSION IN STAINLESS STEEL MATERIALS

- Housing in stainless steel.
- High quality ball bearing in stainless steel.
- Grease-nipple in stainless steel.
- Washer in polyethylene.

COLOUR

- Bearing support in grey (steel).



series SS-UCFQ



Plain Shaft

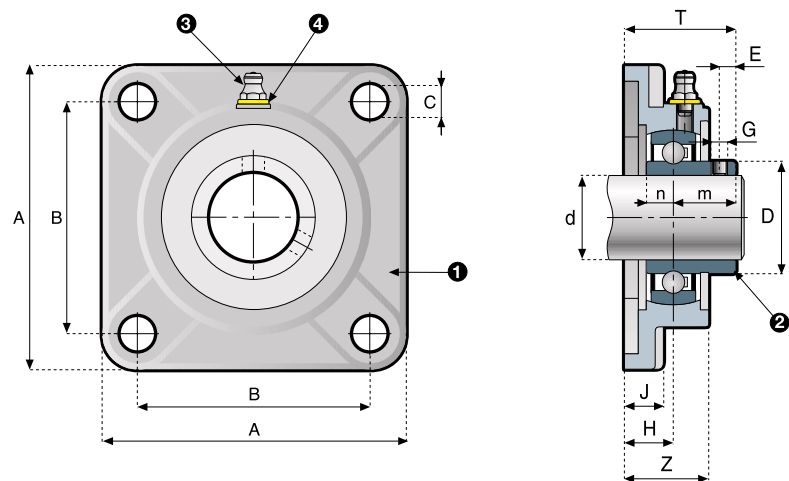


Ø mm



Stainless steel

Series **SS-UCFQ**



version with grub screws

Ø d mm	code	dimensions (mm)												bearing load ratings		weight (Kg)
		A	B	C	D	E	G	H	J	Z	T	m	n	dynamic C (N)	static Co (N)	
STAINLESS STEEL BEARING (with grub screws)																
20	500204FQ	86	63.5	11	28.5	5.4	M6x0.75	15.5	12.5	26	33.7	18.2	7.6	7300	4900	0.65
25	500205FQ	95	70	11	34	5.4	M6x0.75	16	14	27.5	35.8	19.8	7.6	8100	5800	0.91
30	500206FQ	108	82.5	13	40	5.9	M6x0.75	17.5	14	30	39.7	22.2	9	11250	8400	1.20
35	500207FQ	118	92	13	46.7	7.4	M6x0.75	19.5	15	33.5	44.9	25.4	9.6	14700	11400	1.60
40	500208FQ	130	102	14	52.7	8	M8x1.00	21.5	15	37	51.6	30.1	11	16800	13400	2.20

The dimension of the housings related to codes printed in bold letters are unified according to international standards.

Series SS-UCFH



**Flange bearing in stainless steel
series SS-UCFH
for plain shafts
d 20-25-30-35-40 mm**



see also... Features: page 180

Lubrication/maintenance: 181

Mounting instructions: 182

Calculation of load capacity
and bearing life: 184

Accessories: 176

Chemical resistance: 192

TECHNICAL INFORMATION

- **Optimal corrosive resistance.**
- **High load capacity.**
- **100% Stainless steel**
- **Self-alignment:**
Max misalignment between shaft and housing:
2,5°
- **Low maintenance and trouble-free operation.**
- **Concept and design to meet all safety requirements.**
- **Interchangeable :**
Interchangeable with standard cast iron supports.
- **Excellent for use in food processing, beverage and pharmaceutical Industry.**

COMPONENTS

- 1 Housing in stainless steel.
- 2 Adjustable ball bearing, pre-lubricated by means of grease-nipple or a quick coupler.
- 3 Ball-type grease-nipple.
- 4 Washer for grease-nipple.

MAX. RADIAL LOAD CAPACITY OF HOUSING

Values indicated in the table above, are obtained at 23°C. Strength of housing indicated on page 184.



VERSION IN STAINLESS STEEL MATERIALS

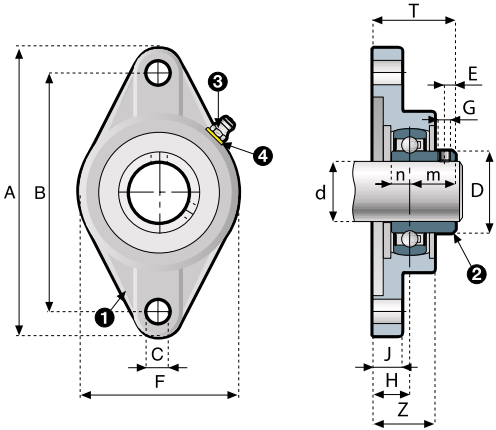
- Housing in stainless steel.
- High quality ball bearing in stainless steel.
- Grease-nipple in stainless steel.
- Washer in polyethylene.

COLOUR

- Bearing support in grey (steel).



Series **SS-UCFH**



version with grub screws

Ø d mm	code	dimensions (mm)												bearing load ratings		weight (Kg)	
		A	B	C	D	E	F	G	H	J	Z	T	m	n	dynamic C (N)		static Co (N)
STAINLESS STEEL BEARING (with grub screws)																	
20	500204FH	112	90	10	28.5	5.4	58	M6x0.75	15.5	12	25.5	33.7	18.2	7.6	7300	4900	0.40
25	500205FH	124	99	12	34	5.4	66	M6x0.75	16.5	14	27	36.3	19.8	7.6	8100	5800	0.58
30	500206FH	141	117	12	40	5.9	78	M6x0.75	18	14	30	40.2	22.2	9	11250	8400	0.90
35	500207FH	156	130	13	46.7	7.4	88	M6x0.75	19	15	33	44.4	25.4	9.6	14700	11400	1.25
40	500208FH	172	144	13	52.7	8	97	M8x1.00	20	15	35	50.1	30.1	11	16800	13400	1.60

The dimension of the housings related to codes printed in bold letters are unified according to international standards.

Series **SS-UCFA**



**Flanged bearing in stainless steel
series SS-UCFA
for plain shafts
d 20-25-30-35 mm**



see also... Features: page 180

Lubrication/maintenance: 181

Mounting instructions: 182

Calculation of load capacity
and bearing life: 184

Accessories: 176

Chemical resistance: 192

TECHNICAL INFORMATION

- **Optimal corrosive resistance.**
- **High load capacity.**
- **100% Stainless steel**
- **Self-alignment:**
Max misalignment between shaft and housing:
2,5°
- **Low maintenance and trouble-free operation.**
- **Concept and design to meet all safety requirements.**
- **Interchangeable :**
Interchangeable with standard cast iron supports.
- **Excellent for use in food processing, beverage and pharmaceutical Industry.**

COMPONENTS

- 1 Housing in stainless steel.
- 2 Adjustable ball bearing, pre-lubricated, lubricated by means of grease-nipple or a quick coupler.
- 3 Ball-type grease-nipple.
- 4 Washer for grease-nipple.

MAX. RADIAL LOAD CAPACITY OF HOUSING

Values indicated in the table above, are obtained at 23°C. Strength of housing indicated on page 184.

VERSION IN STAINLESS STEEL MATERIALS

- Housing in stainless steel.
- High quality ball bearing in stainless steel.
- Grease-nipple in stainless steel.
- Washer in polyethylene.

COLOUR

- Bearing support in grey (steel).



series SS-UCFA



Plain Shaft

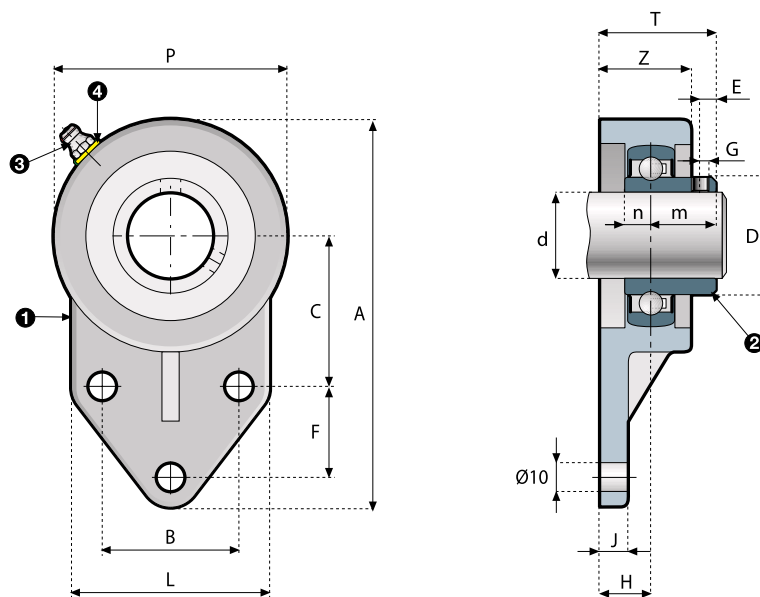


Ø mm



Stainless steel

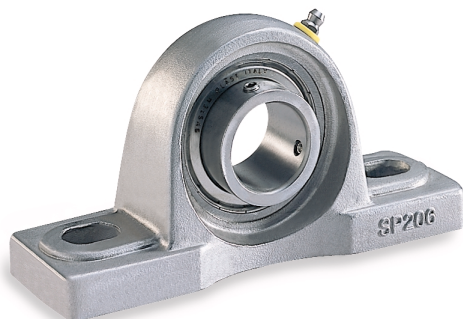
Series SS-UCFA



version with
grub screws

Ø d mm	code	dimensions (mm)															bearing load ratings		weight (Kg)
		A	B	C	D	E	F	G	H	L	P	Z	J	T	m	n	dynamic C (N)	static Co (N)	
STAINLESS STEEL BEARING (with grub screws)																			
20	500204FA	108	38.1	42.8	28.5	5.4	22.2	M6x0.75	16	60	62.5	25.5	8	34.2	18.2	7.6	7300	4900	0.40
25	500205FA	120	41.3	46	34	5.4	28.5	M6x0.75	16	63	69	28	9.5	35.8	19.8	7.6	8100	5800	0.60
30	500206FA	135	47.6	52.4	40	5.9	31.7	M6x0.75	18.5	69	81	32	10	40.7	22.2	9	11250	8400	0.90
35	500207FA	143	50.8	60.3	46.7	7.4	31.7	M6x0.75	19	69	88	34	12.5	44.4	25.4	9.6	14700	11400	1.25

Series **SS-UCP**



**Pillow block in stainless steel
series SS-UCFA
for plain shafts
d 20-25-30-35-40 mm**



see also... Features: page 180

Lubrication/maintenance: 181

Mounting instructions: 182

Calculation of load capacity
and bearing life: 184

Accessories: 176

Chemical resistance: 192

TECHNICAL INFORMATION

- **Optimal corrosive resistance.**
- **High load capacity.**
- **100% Stainless steel**
- **Self-alignment:**
Max misalignment between shaft and housing:
2,5°
- **Low maintenance and trouble-free operation.**
- **Concept and design to meet all safety requirements.**
- **Interchangeable :**
Interchangeable with standard cast iron supports.
- **Excellent for use in food processing, beverage and pharmaceutical Industry.**

COMPONENTS

- 1 Housing in stainless steel.
- 2 Adjustable ball bearing, pre-lubricated by means of grease-nipple or a quick coupler.
- 3 Ball-type grease-nipple (available upon request) quick coupler to take semi-rigid hoses Ø 4 mm in Rilsan (see accessories on page 176).
- 4 Washer for grease-nipple

MAX. RADIAL LOAD CAPACITY OF HOUSING

Values indicated in the table above, are obtained at 23°C. Strength of housing indicated on page 184.

VERSION IN STAINLESS STEEL MATERIALS

- Housing in stainless steel.
- High quality ball bearing in stainless steel.
- Grease-nipple in stainless steel.
- Washer in polyethylene.

COLOUR

- Bearing support in grey (steel).



series SS-UCP



Plain Shaft

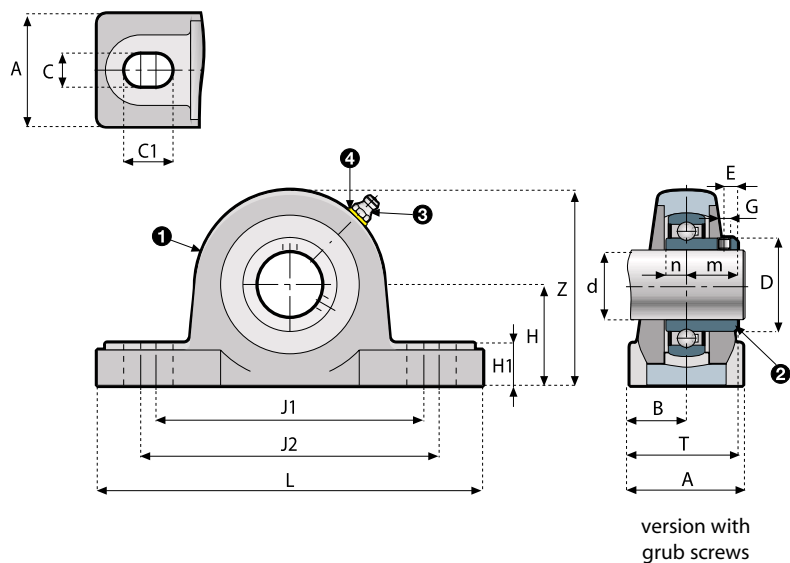


Ø mm



Stainless steel

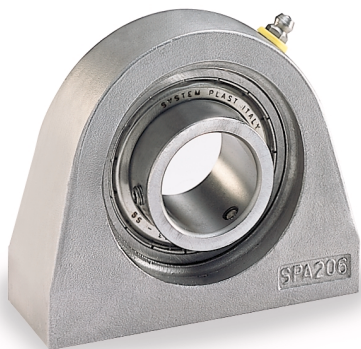
Series **SS-UCP**



Ø d mm	code	dimensions (mm)																bearing load ratings		weight (Kg)
		A	B	C	C1	D	E	G	H	H1	L	Z	J1	J2	T	m	n	dynamic C (N)	static Co (N)	
STAINLESS STEEL BEARING (with grub screws)																				
20	500204P	38	19	11.5	17.5	28.5	5.4	M6x0.75	33.3	16	126	65	89	101	37.2	18.2	7.6	7300	4900	0.58
25	500205P	38	19	13	19	34	5.4	M6x0.75	36.5	15.5	140	71	99	111	38.8	19.8	7.6	8100	5800	0.75
30	500206P	48	24	14.5	21	40	5.9	M6x0.75	42.9	18	164	83	114	127	46.2	22.2	9	11250	8400	1.10
35	500207P	48	24	14.5	23	46.7	7.4	M6x0.75	47.6	19	167	94	119	136	49.4	25.4	9.6	14700	11400	1.45
40	500208P	54	27	14.5	23	52.7	8	M8x1.00	49.2	20	182	100	127	144	57.1	30.1	110	16800	13400	1.75

The dimension of the housings related to codes printed in bold letters are unified according to international standards.

Series **SS-UCPA**



**Compact pillow block
series SS-UCPA in stainless steel
for plain shafts
d 20-25-30-35 mm**



see also... Features: page 180

Lubrication/maintenance: 181

Mounting instructions: 182

Calculation of load capacity
and bearing life: 184

Accessories: 176

Chemical resistance: 192

TECHNICAL INFORMATION

- **Optimal corrosive resistance.**
- **High load capacity.**
- **100% Stainless steel**
- **Self-alignment:**
Max misalignment between shaft and housing:
2,5°
- **Low maintenance and trouble-free operation.**
- **Concept and design to meet all safety requirements.**
- **Interchangeable :**
Interchangeable with standard cast iron supports.
- **Excellent for use in food processing, beverage and pharmaceutical Industry.**

COMPONENTS

- 1 Housing in stainless steel.
- 2 Adjustable ball bearing, pre-lubricated by means of grease-nipple or a quick coupler.
- 3 Ball-type grease-nipple (available upon request) quick coupler to take semi-rigid hoses Ø 4 mm in Rilsan (see accessories on page 176).
- 4 Washer for grease-nipple.

MAX. RADIAL LOAD CAPACITY OF HOUSING

Values indicated in the table above, are obtained at 23°C. Strength of housing indicated on page 184.



VERSION IN IN STAINLESS STEEL MATERIALS

- Housing in stainless steel.
- High quality ball bearing in stainless steel.
- Grease-nipple in stainless steel.
- Washer in polyethylene.

COLOUR

- Bearing support grey (steel).



series SS-UCPA



Plain Shaft

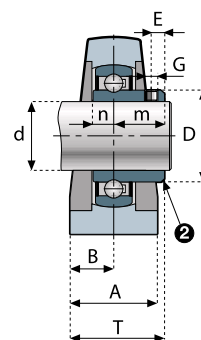
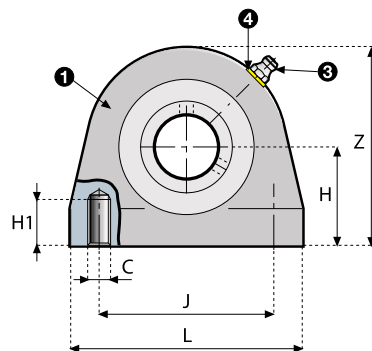


Ø mm



Stainless steel

Series **SS-UCPA**



version with
grub screws

Ø d mm	code	dimensions (mm)														bearing load ratings		weight (Kg)
		A	B	C	D	E	G	H	H1	L	Z	J	T	m	n	dynamic C (N)	static Co (N)	
STAINLESS STEEL BEARING (with grub screws)																		
20	500204PA	37.5	19	M8	28.5	5.4	M6x0.75	33.3	18	72	64	50.8	37.2	18.2	7.6	7300	4900	0.65
25	500205PA	36	17.5	M8	34	5.4	M6x0.75	36.5	20	75.5	72	50.8	37.3	19.8	7.6	8100	5800	0.80
30	500206PA	37.5	19	M10	40	5.9	M6x0.75	42.9	20	101	86	76.2	41.2	22.2	9	11250	8400	1.15
35	500207PA	47.5	23.5	M12	46.7	7.4	M6x0.75	47.6	22	107	93	82.6	48.9	25.4	9.6	14700	11400	1.60

The dimension of the housings related to codes printed in bold letters are unified according to international standards.

Series SS-UCT



**Take-up support in stainless steel
series SS-UCT
for plain shafts
d 30 mm**



see also... Features: page 180

Lubrication/maintenance: 181

Mounting instructions: 182

Calculation of load capacity
and bearing life: 184

Accessories: 176

Chemical resistance: 192

TECHNICAL INFORMATION

- **Optimal corrosive resistance.**
- **High load capacity.**
- **100% Stainless steel**
- **Self-alignment:**
Max misalignment between shaft and housing:
2,5°
- **Low maintenance and trouble-free operation.**
- **Concept and design to meet all safety requirements.**
- **Interchangeable :**
Interchangeable with standard cast iron supports.
- **Excellent for use in food processing, beverage and pharmaceutical Industry.**

COMPONENTS

- 1 Housing in stainless steel.
- 2 Adjustable ball bearing, pre-lubricated by means of grease-nipple or a quick coupler.
- 3 Ball-type grease-nipple.
- 4 Washer for grease-nipple.

MAX. RADIAL LOAD CAPACITY OF HOUSING

Values indicated in the table above, are obtained at 23°C. Strength of housing indicated on page 184.

VERSION IN STAINLESS STEEL MATERIALS

- Housing in stainless steel.
- High quality ball bearing in stainless steel.
- Grease-nipple in stainless steel.
- Washer in polyethylene.

COLOUR

- Bearing support grey (steel).



series SS-UCT



Plain Shaft

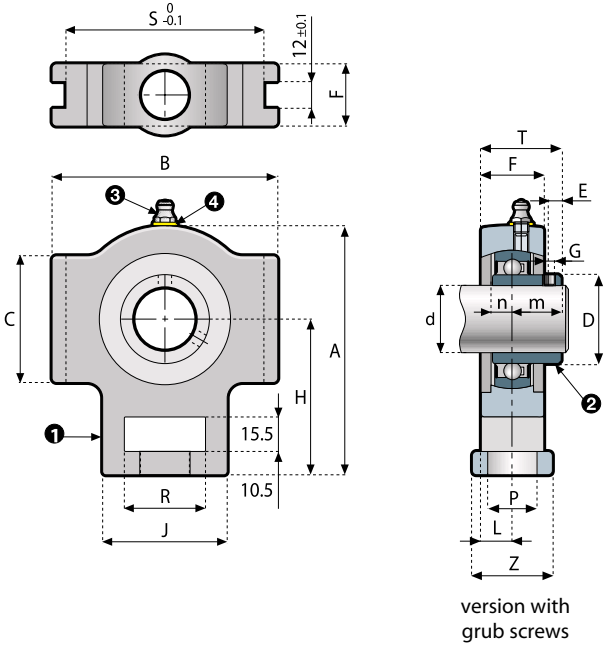


Ø mm



Stainless steel

Series **SS-UCT**



Ø d mm	code	dimensions (mm)																	bearing load ratings		weight (Kg)
		A	B	C	D	E	F	L	G	H	ØP	R	S	J	Z	T	m	n	dynamic C (N)	static Co (N)	
STAINLESS STEEL BEARING (with grub screws)																					
30	500206T	112	101.5	57	40	5.9	28	14	M6x0.75	70	22	36.5	88.5	56	36	36.2	22.2	9	11250	8400	1.25

The dimension of the housings related to codes printed in bold letters are unified according to international standards.

